



plantforce

plantforce.com

“Whilst experience and service is key, we also look to the future. Our progress with machine control technology, people – plant interface and telematic reporting has seen the company reach new limits regarding innovation and enhanced customer fulfillment.”



One Brand. One Team. One Plantforce.

Plantforce are a national supplier of technologically advanced plant hire machinery tailored to the construction, rail, major project and energy industries.

Who we are

Established in 1999, we have grown year on year to now provide one of the largest and most diverse ranges of machinery and skilled operators in the UK. With divisions such as Plantforce Compact, Attachments, Digital and Crushing and Screening, we are able to meet industry needs, with industry specific equipment. While expansion has seen us grow nationally and provide plant from the top of Scotland to the most southern parts of Cornwall, we have kept the companies tradition of servicing all projects with the same attention to detail.

Building our business around the needs of our customers has given us the foundation to service major developments, such as the construction of the Hinkley Point Nuclear Power Station. This project was Europe's largest construction site and we are proud to support it's progress, having been Principle Supplier for over 9 years, we have had more than 300 items of plant on hire and over 200 working personnel onsite at peak times. It has given us valuable experience which we are able to pass on to every client when they choose us.

"A company is only as good as its people"

Sam Mercer - Chief Executive Officer





Our People

People are the heart of our business. This is why we place such a strong emphasis on creating the right working culture. One that's based on a collective respect for ethics and principles, where you're encouraged to really make the most of your talents in a supportive environment.



**Community
Engagement**

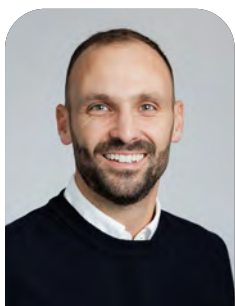


**Developing
Our People**



**Mental Health
Awareness**

Our Leadership Team



Sam Mercer
Chief Executive Officer



Charles Murphy
Chief Financial Officer



Chris Matthew
Commercial Director



Claire Trott
Founder Executive
Director



Jane Gibbons
Operations Director



“Since my first day, Claire has always said that “any business is only as good as its people”. This has stuck with me, and when I look around the team at Plantforce, I can see how that has been embedded into our culture. With members of the team like Chris Bruce (Sales Director) that have been with us for all 25 years and over, we are very lucky to have a large percentage of long-serving staff. Something that is no mean feat when you look at the huge changes we have gone through to transform from our humble beginnings in a muddy yard in Yatton to the national player we are today. None of this would have been possible without the hard work and dedication of our team, whose ability to adapt and overcome always astounds me.

Although we have always held our family-run business ethos close to our hearts, as a collective, we have an astute recognition that our teams’ individuality is what sets us apart. As a business with a diverse leadership team, we always have and will continue to understand the challenges people in all minorities face and will strive to offer both an inclusive environment within our business, but also open the doors to the rest of the industry. The perfect example is our apprenticeship programme, which continues to provide a gateway to the industry for all, regardless of age, ethnicity, gender, sexual orientation or any other factor that could discriminate.”

Sam Mercer





Community *Team*

At Plantforce, we are committed to having a positive impact in the communities where we are both based and operate.

We recognise that our company's success is linked to the health of our local communities, and so we strive to make a positive difference through our work. We are committed to engaging with our customers and local communities, to ensure our activities have a positive impact on people's lives. We also strive to provide our customers with the best possible service, so that they can benefit from our work in the local area.

We understand that our work, and the people we work with, can have a lasting and positive effect on the communities we serve.

Social Engagement

Plantforce has an inclusive culture where differences are valued, and individuality is fully embraced. One of the ways we support this is by creating an ethos that encourages our staff to identify ways we can deliver a positive impact in the communities we operate.



Supporting local
charities & causes



Volunteering our time
to help others



Playing an active
role in local
business discussions



Supporting local
community
sports teams

Supporting partnered charities



To make a big difference



£130,000+

values of donations
raised so far



500 hours+

volunteer hours donated
by our team using their
annual volunteering day
allowance



50+

number of unique
awareness & fundraising
activities completed
by our team

Proud to support Community Sport Teams





SevernNet Business Breakfast Meeting

Leading The Construction Industry Towards A Zero Emissions Future

Plantforce is a partner in the Element 1 project. Funded by the UK Government Department for Energy Security and Net Zero, this initiative introduces hydrogen as a cleaner fuel to reduce diesel use in heavy off-highway equipment on construction sites. By adapting engines to run on 30-50% hydrogen, this project will test the feasibility of rolling out hybrid hydrogen-diesel engines to existing machines, which will cut emissions without replacing machinery, avoiding unnecessary waste.

Over the project duration, the project partners will showcase these solutions on live construction sites, demonstrating hydrogen's role in reducing fossil fuel reliance. The design and demonstration of an end-to-end solution for the manufacture, supply, distribution, storage and use of hydrogen as a fuel are all included within the project scope.



Thornhills Beck Lane Kobelco Deployment



Element | Meeting - London

Victoria North - 1st Deployment



Sustainability



Sustainability At Our Core

At Plantforce, we are dedicated to reducing our environmental footprint across all areas of our operations. Recognising our role within a larger ecosystem, we embrace our responsibility to protect and preserve the environment. This commitment is evident in our focus on sustainability, our investments in advanced fleet technology, and our comprehensive training programs.



Net Zero
carbon emissions
by 2045



Reduce carbon
emissions to 50% of
2021 levels by 2030



Reduce carbon intensity
to 50% of 2021
levels by 2030

Our Commitment

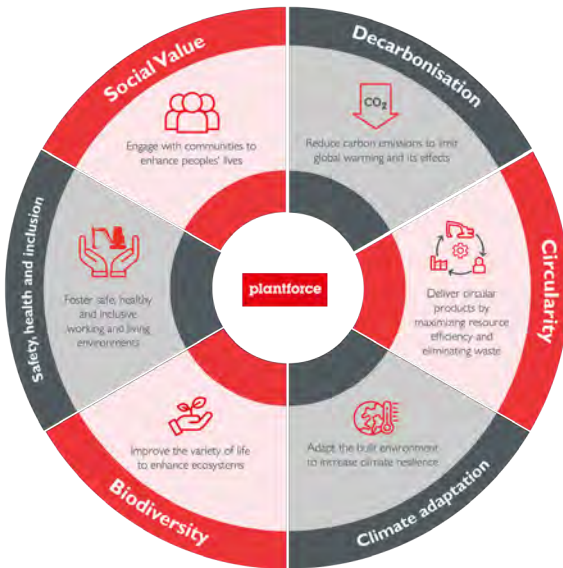
Sustainability starts from within. We are committed to continuously improving our operations, reducing waste, and transitioning to cleaner, more efficient solutions. Through, but not limited to, the following initiatives:

- ✓ **Electric & Fuel-Efficient Company Vehicles**
- ✓ **Improvement of Operational Efficiency**
- ✓ **Waste Reduction & Recycling**
- ✓ **Environmental Impact-Driven Fleet Procurement Strategy**

By taking responsibility for our own environmental impact, we are setting new standards for sustainability in our industry.



Our Sustainability Strategy



Decarbonisation

Reduce carbon emissions to limit global warming and its effects.

Circularity

Deliver circular products by maximising resource efficiency and eliminating waste.

Climate adaptation

Adapt the built environment to increase climate resilience.

Biodiversity

Improve the variety of life to enhance ecosystems.

Safety, health and inclusion

Foster safe, healthy and inclusive working and living environments.

Social value

Engage with communities to enhance peoples' lives.

Fleet Investment Strategy

Through our forward-thinking fleet investment strategy, we're adopting cleaner, more efficient technologies that align with our vision of a greener tomorrow.

- Focus On Fuel Efficiency
- Adopt New Technology
- Investment In Diesel Replacement Technology
- Low-Age Profile Fleet Renewal

Industry Collaboration

We believe in the power of partnership to drive change. By working closely with industry leaders, we innovate solutions that not only meet today's needs but also anticipate the demands of tomorrow. Together, we're redefining what's possible in sustainability.



First Deployment Of The Dual-Fuel Hydrogen Excavator



[Click Here to view the full video](#)

Advanced Safety Solutions



Slew & Height Restrictions



3D Avoidance Zone Systems



Human Form Recognition Cameras



Digital Thumbs Up



RCI

Trusted Safety Partners



Advanced Safety Technologies

Our advanced safety technologies are designed to enhance situational awareness, prevent collisions, and ensure compliance with industry safety standards.

Whether it's preventing hazardous interactions with 3D Avoidance Zone Systems, or using Human Form Recognition Cameras to monitor pedestrian proximity, our solutions empower operators with instant feedback and automated safeguards to eliminate risks before they become incidents.

Physical Safety Systems

Physical safety systems provide the first line of defence in protecting operators and site personnel, reducing human error and enforcing best practices on-site. All machines are equipped with excavator check valves, ensuring controlled hydraulic flow to prevent unintended movement and enhance operational safety.

By integrating these durable, site-ready safety solutions, businesses can reinforce workplace safety standards, enhance compliance, and create a more secure working environment for everyone.



Hydraulic Quick Hitch

Secure attachment system ensuring that buckets and tools are properly locked in place, reducing the risk of dropped loads.



Hand Rail Systems

Robust safety rails and site barriers to keep workers at a safe distance from moving equipment and high-risk areas.



Three Points Of Contact

Ergonomic handholds and access points designed to ensure operators maintain safe contact when entering and exiting machinery.



Keypad Immobiliser

Keypad immobilisers prevent unauthorised use of heavy machinery by requiring a secure PIN code, enhancing equipment security and preventing misuse.



People-Plant Interface Training

We are committed to ensuring the safety of our staff and external operators by providing comprehensive People-Plant Interface (PPI) training. This training equips individuals with the knowledge and skills needed to safely navigate environments where people and machinery interact, minimising risks and enhancing workplace safety.



Health & Safety

Committed To Ensuring That
Everyone Returns Home Safely And
Healthy At The End Of The Working Day.



Here at Plantforce health and safety is our priority, whether this is ensuring the health and wellbeing of our team through medicals and welfare engagement or making certain that we are working and collaborating in the safest way possible with the help of our robust inspection and audit strategy.

Our dedicated team of health and safety professionals ensures that we operate at the highest levels of compliance and best practice. They are committed to driving our vision of continual improvement across the business, fostering a culture where safety, wellbeing, and operational excellence go hand in hand.





Culture

Develop a proactive approach to risk reduction and prevention of accidents, injuries and ill-health by promoting the IFE process, doing regular risk assessments and audits, and encouraging employee involvement and participation.



Competence

Develop health and safety education which inspires and empowers people to work safely, or not at all. Equal emphasis on occupational health is a pre-requisite.



Communication

Ensure clear, consistent communications utilising a range of channels to reach all stakeholders.



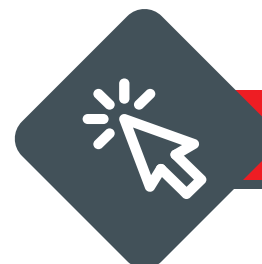
Controls

Ensure we have effective systems in place and they are adhered to consistently through our integrated business management system.
Controls and systems to include the management of process risks.



Health & Wellbeing

We focus on the workplace, our workers, and overall well-being by developing skills and capabilities that preserve, protect, and promote the health and well-being of our employees.



[Click here to find out more on our website](#)

Partnerships



LP Training

LP Training Services are an experienced training provider, originally from Bridgwater, where we deliver our industry leading training and apprenticeships program. We equip workers and clients with the

skills and accreditations required for roles in Construction, Rail, and Major Infrastructure projects across the UK. Our flexible approach is accommodating and ensures the best chance of success.



[Click Here to view more about this partnership](#)



“We continuously invest in the latest training equipment and programmes to ensure our workforce are up-skilled to meet ever updating demands of the UK construction industry.”

Weston College

No longer do engineers use paper drawings and spray paint to mark out a road formation on the ground, or a stick to measure the fuel level in an excavator, it's all about fuel efficiency and communication systems. The excavators use telematics systems to report on fuel economy, engineers are designing buildings in cloud-based 3D CAD software which is then loaded on to the machine remotely. In the very same way a

satnav tells you where to go, the same tech is used to guide an excavator to grade, manage materials and plan work flows. Plantforce take pride in educating the future of our industry in partnership with Weston College. This approach delivers fresh talent that have been trained on the latest generation of machines and a full range of aftermarket technology solutions from leading manufacturers.



Quality & Governance

At Plantforce, we understand the importance of providing our customers with a consistently high level of service. We strive to not only meet the expectations of our customers, but to exceed them. This is why we are committed to offering a service that our customers value, while ensuring that the same level of service is achieved each and every time. Our commitment to this is demonstrated in the accreditations we have achieved and continue to work towards.

Accreditations

We maintain and develop our strong safety culture ensuring that all levels of the business are involved in health, safety and training from directorship to our operatives on the ground. We hold regular safety meetings throughout all tiers of the business to ensure everyone's involvement.

Our qualified team are proud to have had our quality and safety management systems externally accredited to ISO 14001, ISO 45001, ISO 9001 and ISO 50001 standards.

Our commitment is reflected across the board, from the information available within the hire process to the backup and support when having to deal with site incidents.

As subscribers to the Construction Industry Training Board (CITB) and active members of the Construction Plant Association (CPA), we are always at the forefront of new developments and ensure our staff are trained in the latest techniques.





Click Here to view
our policies



Trade Associations

With one of the focuses looking at personnel satisfaction, our health and safety department aim to continually improve on our companies safety expectations.



Major Projects

We Are A Tried And Tested Tier I Supplier.

Established as a regional plant hire company in 1999, we have grown year after year to provide one of the largest and most diverse ranges of machinery and skilled operators in the UK. With divisions such as Plantforce Compact, Attachments, Digital, Heavy Haulage and Crushing & Screening, we can meet industry needs with industry-specific equipment.

Building our business around the needs of our customers has given us the foundation to service major developments, including being the only Plant Hire provider to be awarded Tier I status on the two largest civil engineering projects, Hinkley Point Nuclear Power Station and High Speed Rail 2.

Find out more about our involvement in these projects below.



HS2

Plantforce secured Tier I supplier status for the largest earthmoving project in Europe, HS2. One of only three appointments to this status by principal contractor EKFB, Plantforce supply a full range of earthmoving equipment and digital technology solutions. With phase one of HS2 set to create 140 miles of dedicated track between London Euston and Curzon Street station in Birmingham, the project requires 22,000 workers to complete 130 million tonnes of earth to be excavated, spread

over 200 construction sites. EKFB is a joint venture between major civil engineering and construction companies: Eiffage, Kier, Ferrovial and BAM. It has been appointed by HS2 to deliver civil engineering works across an 80-kilometre section of the new high-speed rail link between the Chiltern Tunnel and Long Itchington. The section will include 15 viaducts, 6.9 kilometres of green tunnels, 22 kilometres of road diversions, 81 bridges and around 30 million cubic meters of excavation.

Hinkley Point C is the largest project that the South West has ever seen and Plantforce Rentals are very proud of the fact that we were the first Plant Hire Company to start this prestigious construction project.

Working in the nuclear industry since 2011, Plantforce have a dedicated on-site Project Manager as well as our own Health and Safety Officer.

Situated just off junction 23 of the M5 in Dunball industrial estate, Plantforce is ideally positioned next door to the new Park and Ride and Freight Management Centre for Hinkley Point C.

Fully committed on employing local labour for Hinkley Point C, Plantforce have adopted a stringent vetting process to meet the requirements needed to be able to work on a Nuclear Power Station with a particular emphasis on Health and Safety. All our fully qualified and

security-cleared operators have gone through the necessary training. They also have the accreditation required to be able to work on this Nuclear Site and all our machines are compliant to Nuclear Site Health and Safety regulations. As well as a full range of excavators Plantforce also have a huge array of first class attachments available from our Bridgwater depot.



Working closely with the Somerset Chamber of Commerce and the Hinkley Supply Chain, Plantforce are an EDF Approved supplier and committed in providing a first class service with the best machinery on the market.



Overview of Services



Operated plant hire

Giving you access to over 4500 qualified and vetted operators.

At Plantforce, we have our own CCNSG-cleared, CPCS and PTS-accredited plant operators, so we can provide the perfect solution whether you're looking for self-drive or operated equipment.

In addition to our directly employed operators, we maintain a comprehensive database of qualified operators, their machine certifications, and performance reviews from previous jobs for your use.

With all our operators' information available at the click of a mouse via the Plantforce POD online portal, your sites will have all the information they require, when they need it.



Take control with one, easy to use, in-depth platform

HIRE Insights gives you total visibility of the data from your projects. Presenting this data as meaningful information from one intuitive online platform, you can easily identify potential operational improvements.

From identifying reductions in your carbon emissions, improving your operational efficiency and saving costs, your team will have the information they need to make decisions based on facts, rather than anecdotal feedback.



Self-drive plant hire

At Plantforce, we have one of the largest and most diverse ranges of machinery in the UK. Our team of qualified engineers perform rigorous checks, both pre and post hire to ensure that our machines arrive in the best possible condition. We also have a proactive complaints process, which is very much a collaborative approach to dealing with any issues that might arise.



Plant



What we do



Tracked Excavators



Dozers



ADT's



Loading Shovels



Rollers



Site Dumpers



Wheeled Excavators



Telehandlers

A fuel-efficient, fresh and reliable fleet at your fingertips

As the cornerstone of the Plantforce offering, our extensive fleet of excavators, dumpers, rollers, dozers and much more for use in a wide range of applications such as construction, demolition, recycling and earthworks projects, to name a few.

Self Drive Plant Hire



Got the team, need the machine?

Our self-drive plant hire service allows customers to utilise their own qualified operators to operate a machine hired from Plantforce and reduce the total cost of the rental.

Self-drive plant hire is available across our entire range of equipment. It is perfect for businesses that either do not want the cost of purchasing their own equipment or need a temporary increase in the number of machines.

With delivery available throughout the UK, you can get a reliable and fuel-efficient machine for your project as soon as the next day.

You have the reassurance that our fleet is backed up by our team of qualified mobile service engineers. You can trust that if there is an issue, we will promptly respond, getting you up and running again.





Operated Plant Hire

Plantforce **Operations Database**

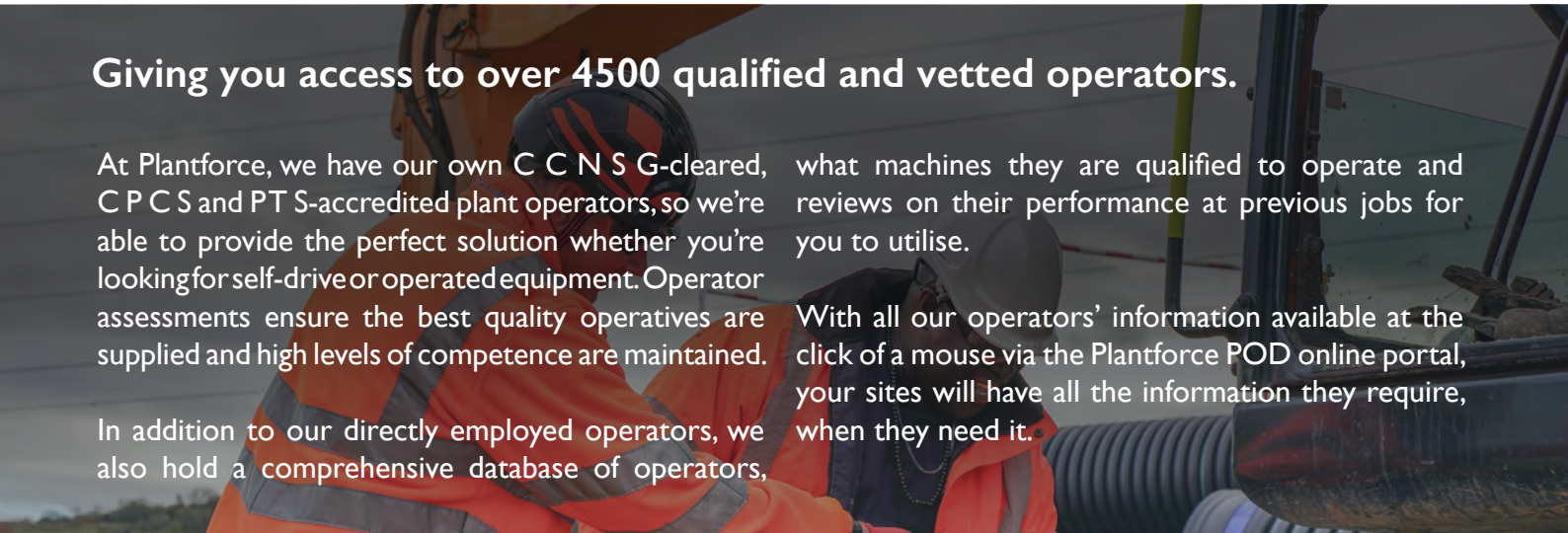
With the introduction of the Plantforce Operations Database “POD”, not only does this allow us to record all of our operatives details but to act as a competency and training matrix also, highlighting the expiry dates of not only their current competency but any additional training and qualifications such as safety critical medicals & bespoke inductions etc.

The development and introduction of the tailor-made ‘POD’ platform has proven excellent for not only resource & managing the operators in terms of competencies for all machines, but it gives a full overview of the capabilities in its entirety as well as the operators experience and scoring from previous experiences on different job types, demonstrating to our clients the operators proven track record and levels of ability.

POD is also available to all of our Clients that request it giving access to all of the operators allocated to them at any one time across the nation with the same search ability to allow continued transparent analysis of each operator throughout.

Furthermore to reinforce our continued analysis and support of our workforce we have a dedicated member of staff that carries out site visits to conduct competency tests on all site personnel.

This experienced member of staff prioritises visiting operators with CPCS cards to verify the individuals ability using the specific machine they are working on as well as reviewing the need for further training or areas they feel up-skilling would be beneficial. We believe that this further level of support is extremely beneficial to both the client and ourselves cementing the need for continuity of competencies.



Giving you access to over 4500 qualified and vetted operators.

At Plantforce, we have our own C C N S G-cleared, C P C S and P T S-accredited plant operators, so we're able to provide the perfect solution whether you're looking for self-drive or operated equipment. Operator assessments ensure the best quality operatives are supplied and high levels of competence are maintained.

In addition to our directly employed operators, we also hold a comprehensive database of operators,

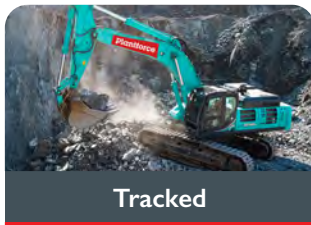
what machines they are qualified to operate and reviews on their performance at previous jobs for you to utilise.

With all our operators' information available at the click of a mouse via the Plantforce POD online portal, your sites will have all the information they require, when they need it.

Tracked Excavators



Range Overview



Tracked



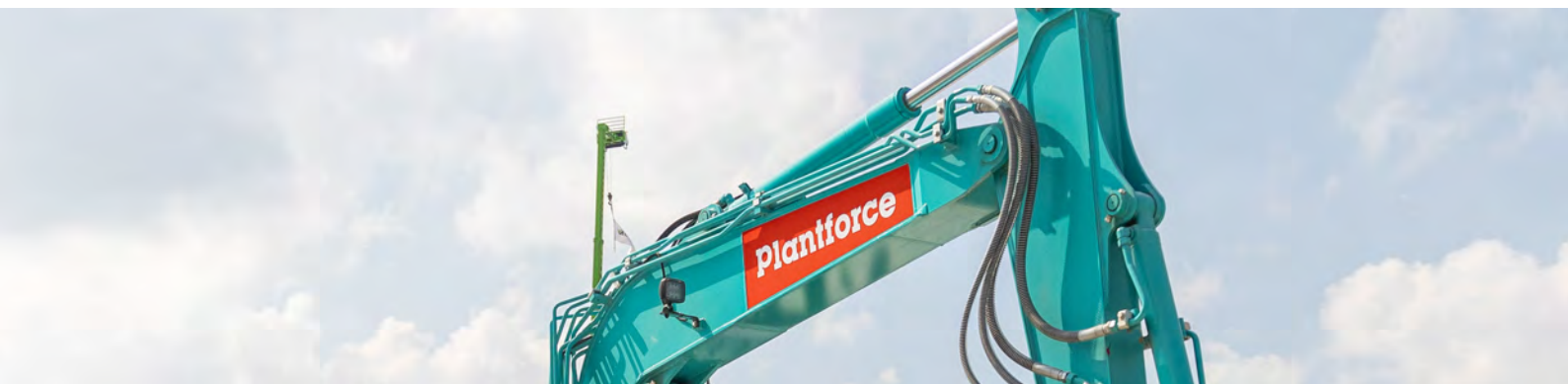
Wheeled



Long Reach



Demolition



14t - 27t Tracked Excavators

Manufacturer	Model	Weight	Height	Length	Width	Maximum Dig Reach	Maximum Dig Depth
Kobelco	SK140	14,800 Kg	2,860 mm	7,500 mm	2,690 mm	8,780 mm	5,520 mm
Kobelco	SK210	22,100 Kg	3,060 mm	9,600 mm	2,990 mm	9,900 mm	6,700 mm
Kobelco	SK230	22,900 Kg	3,160 mm	8,830 mm	2,990 mm	9,700 mm	6,580 mm
Kobelco	SK270	26,600 Kg	3,180 mm	8,970 mm	3,190 mm	9,850 mm	6,650 mm



Tracked Excavators 30t – 85t

Manufacturer	Model	Weight	Height	Length	Width	Maximum Dig Reach	Maximum Dig Depth
Kobelco	SK300	30,600 Kg	3,270 mm	10,710 mm	3,190 mm	10,870 mm	7,200 mm
Kobelco	SK350	35,400 Kg	3,250 mm	12,000 mm	3,340 mm	12,100 mm	7,790 mm
Kobelco	SK500	50,800 Kg	3,380 mm	12,140 mm	3,350 mm	12,007 mm	7,810 mm
Kobelco	SK500-ME	52,700 Kg	3,380 mm	12,140 mm	3,350 mm	12,007 mm	7,810 mm
Kobelco	SK520	54,900 Kg	3,670 mm	12,160 mm	3,460 mm	12,070 mm	7,770 mm
Kobelco	SK850	80,900 Kg	3,770 mm	14,600 mm	4,440 mm	13,480 mm	8,300 mm

All our excavators are available with **multi-brand GPS, height and slew restriction systems.**



Wheeled Excavators 10t – 18t

Manufacturer	Model	Weight	Height	Length	Width	Maximum Dig Reach	Maximum Dig Depth
Hyundai	HW100W	11,790 kg	3,011 mm	5,687 mm	2,450 mm	7,820 mm	4,245 mm
Hyundai	HW140W	14,880 Kg	3,500 mm	7,760 mm	2,500 mm	8,310 mm	5,010 mm
Hyundai	HW160W	17,100 Kg	3,450 mm	8,400 mm	2,500 mm	8,860 mm	5,650 mm
Hyundai	HW170W	18,820 Kg	3,940 mm	7,860 mm	2,530 mm	8,950 mm	5,565 mm
Hyundai	HW180W	18,360 Kg	3,940 mm	8,400 mm	2,500 mm	9,020 mm	5,820 mm

All our wheeled excavators are available with **multi-brand tiltrotators, towable trailers and onboard safety features to aid in lone man working environments.**



Long Reach Excavators

Manufacturer	Model	Reach	Weight	Height	Length	Width	Maximum Dig Reach	Maximum Dig Depth
Kobelco	SK140 LR	12m	14,100 Kg	2,790 mm	11,050 mm	2,590 mm	10,380 mm	4,120 mm
Kobelco	SK210	16m	23,000 Kg	3,169 mm	14,569 mm	2,990 mm	14,752 mm	5,520 mm
Hyundai	HX220	16m	24,820 Kg	3,280 mm	12,030 mm	15,220 mm	11,760 mm	6,700 mm
Kobelco	SK260	18m	26,600 Kg	3,100 mm	9,785 mm	18,321 mm	14,752 mm	7,200 mm



Demolition Excavators

Manufacturer	Model	Weight	Height	Length	Width	Maximum Dig Reach	Maximum Dig Depth
Kobelco	SK140	14,100 Kg	2,860 mm	7,500 mm	2,590 mm	8,340 mm	5,520 mm
Kobelco	SK210	22,100 Kg	3,060 mm	9,600 mm	2,990 mm	9,900 mm	6,700 mm
Kobelco	SK300	30,600 Kg	3,270 mm	10,710 mm	3,190 mm	10,870 mm	7,200 mm
Kobelco	SK350	35,400 Kg	3,250 mm	12,000 mm	3,340 mm	12,100 mm	7,790 mm
Kobelco	SK500	50,800 Kg	3,380 mm	12,140 mm	3,350 mm	12,007 mm	7,810 mm

Dozers



Dozers 9t - 23t

Manufacturer	Model	Weight	Height	Horsepower	Width
CAT	D3	13,980 Kg	1,700 mm	100 hp +	1,780 mm
CAT	D4	13,272 kg	1,768 mm	125 hp +	2,330 mm
CAT	D5	19,170 kg	3,085 mm	160 hp +	2,500 mm
CAT	D6	23,012 Kg	3,235 mm	200 hp +	4,160 mm
Komatsu	D6I	19,400 kg	3,180 mm	168 hp	3,530 mm
CAT	D6TVPAT	22,240 Kg	3,200 mm	200 hp +	3,706 mm
Komatsu	D65	22,100 kg	3,160 mm	217 hp	3,670 mm
Komatsu	D7I	23,100 kg	3,170 mm	237 hp	2,840 mm
CAT	D7	29,776 kg	3,430 mm	240 hp +	3,920 mm
Komatsu	D85	23,500 Kg	3,080 mm	264 hp	3,635 mm
CAT	D8	39,500 Kg	1,747 mm	320 hp +	4,020 mm

Loading Shovels



Loading Shovels | 17t - 25t

Manufacturer	Model	Weight	Height	Length	Width	Bucket Capacity
Hyundai	HL960	18,800 Kg	5,640 mm	8,140 mm	2,900 mm	3.4 m ³
Hyundai	HL970	23,500 Kg	5,970 mm	8,740 mm	3,100 mm	4.2 m ³

To find out more information [Click here](#)

Looking for an operator?
[Click Here](#)

Dumpers



Dumpers 1t - 9t

Manufacturer	Model	Weight	Height	Length	Width
Thwaites	1t	1,225 Kg	2,860 mm	3,192 mm	1,115 mm
Wacker Neuson	1t	1,261 kg	2,580 mm	3,080 mm	1,180 mm
Thwaites	3t	2,110 Kg	3,092 mm	3,935 mm	1,650 mm
Wacker Neuson	3t	1,987 kg	2,969 mm	3,904 mm	1,730 mm
Thwaites	6t Straight	4,120 Kg	3,300 mm	4,780 mm	2,240 mm
Thwaites	6t Swivel	4,400 Kg	3,300 mm	4,780 mm	2,240 mm
Thwaites	6t Cab	4,880 kg	3,145 mm	4,815 mm	2,280 mm
Wacker Neuson	6t Duel View	4,002 kg	3,435 mm	4,448 mm	2,196 mm
Thwaites	9t	4,660 Kg	3,335 mm	4,635 mm	2,440 mm
Thwaites	9t Cab	5,310 kg	3,285 mm	4,670 mm	2,485 mm
Wacker Neuson	9t Duel View	4,252 kg	3,483 mm	4,622 mm	2,420 mm

ADTs



ADTs 7t - 40t

Manufacturer	Model	Weight	Height	Length	Width
Hydrema	912	7,270 Kg	2,750 mm	5,950 mm	2,490 mm
Hydrema	922	15,900 Kg	3,490 mm	9,130 mm	3,240 mm
Bell	B20	16,493 Kg	3,619 mm	9,271 mm	3,102 mm
Bell	B25	18,910 Kg	3,454 mm	9,271 mm	2,550 mm
Bell	B30	19,216 Kg	3,426 mm	9,953 mm	2,940 mm
Terex	TA300	28,000 Kg	3,560 mm	9,930 mm	2,860 mm
Terex	TA400	32,233 Kg	4,040 mm	11,197 mm	3,487 mm
Rokbak	RA30	28,000 Kg	3,560 mm	9,930 mm	2,860 mm
Rokbak	RA40	38,000 Kg	3,945 mm	11,115 mm	3,358 mm

Telehandlers



Telehandlers 4m - 18m

Manufacturer	Model	Lift Height	Operating Weight	Load
JCB	525-60	6 m	5,490 Kg	2500 Kg
JCB	531-70	7 m	7,060 Kg	3100 Kg
JCB	540-140	14 m	10,880 Kg	4000 Kg
JCB	540-170	17 m	12,060 Kg	4000 Kg

All our Telehandlers can be hired with the following optional attachments:

- Buckets
- Lifting Hooks
- Sweepers

Rollers



Rollers 1t -20t

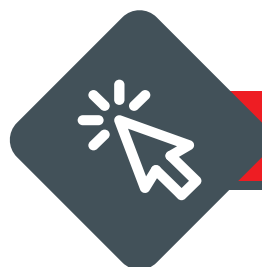
Manufacturer	Model	Weight	Drum Width	Compaction
Ammann	ARR 1575	1,450 Kg	850 mm	36 Kn
Ammann	ARX12	1,475 Kg	820 mm	23 Kn
Ammann	ARX26	2,460 Kg	1,200 mm	47 Kn
Ammann	ARX36	3,740 Kg	1,300 mm	50 Kn
Ammann	ARX45	4,685 Kg	1,380 mm	57.6 Kn
Ammann	ASCI 110	11,495 Kg	1,500 mm	206 Kn
Ammann	ARS130	12,510 Kg	2,130 mm	285 Kn
Ammann	ARS150	14,580 Kg	2,130 mm	325 Kn
Ammann	ASCI 150	14,580 Kg	2,130 mm	237 Kn
Ammann	ARS220	22,060 Kg	2,130 mm	375 Kn

Rollers are available with smooth drum or sheepfoot



Tractors

Tractors 8t - 9.5t



To find out more information
Click here

Manufacturer	Model	Machine Weight	Max Power	Dimensions
John Deere	6155M	7,800 Kg	171 hp 125 kW	(W) 2,490mm x (H) 3,030mm
John Deere	6155R	8,120 Kg	171 hp 125 kW	(W) 2,490mm x (H) 3,030mm
John Deere	6175R	8,300 Kg	193 hp 142 kW	(W) 2,550mm x (H) 3,160mm



Gators

Gators 1t -20t

Manufacturer	Model	Machine Weight	Dimensions
John Deere	XUV865M	1,056 Kg	W 1.76 H 1.99, L 3.36



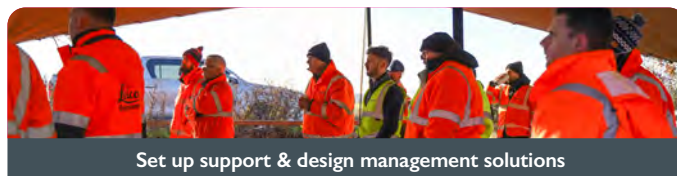
Plantforce Digital is a specialist division, focused on offering GPS solutions that allow our customers to increase the accuracy and efficiencies of their projects.

Our team of GPS experts are on the forefront of the latest innovations in this technology, ensuring we have an extensive fleet of GPS enabled machines and stand-alone units available for immediate hire. By only working with leading manufacturers, we are able to offer a consistent quality solution for all customers.

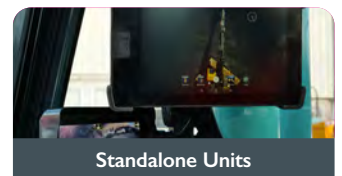
What we do



Complete Machine



Set up support & design management solutions



Standalone Units



Why Choose Plantforce Digital

Plantforce Digital are the leading independent supplier of GPS machine control systems in the UK.



Over 2 Decades of Experience (digital)

We have partnered with the leading manufacturers of GPS technology to grow the largest fleet of GPS machine control hire fleets in the UK.



Huge Range Of Solutions For Your Needs

From just the GPS equipment to attach to your own machine or a GPS-ready machine for you to attach your kit to, through to a complete machine and GPS machine control set-up, Plantforce Digital offer the right solution for your project.



Technical Support Team On Hand

We are always here to help you through your digital hire journey, we provide intelligent solutions for companies of all sizes. From installation, design consultation and ongoing technical support, you can start digital digging with the reassurance that our dedicated service team are available to support you, no matter where you are in the UK.

Working with World Leaders



Not sure what you're looking for?

Speak to our Digital lead

T: 07470 527 111

Base Stations



Leica Base Station

Our Leica GPS base station kit hire range will allow you to complete your own GNSS surveys without the financial commitment of purchasing the expensive equipment yourself.

Leica is widely recognised as one of the leading manufacturers of GPS machine control technology.



Unique Machine Features:

- Compatible to work with all Leica GPS solutions
- Installation support available
- Technical user support is available
- Site set-up support is available
- Design preparation service is available
- Technology training is available
- Nationwide delivery and/or collection available



Trimble Total Station

Our Trimble GPS total station kit hire range will allow you to complete your own GNSS surveys without the financial commitment of purchasing the expensive equipment yourself.

Trimble is widely recognised as one of the leading manufacturers of GPS machine control technology. The new Trimble Earthworks Platform is designed to help operators do more in less time than ever before.



Unique Machine Features:

- Compatible to work with all Trimble GPS solutions
- Installation support available
- Technical user support is available
- Site set-up support is available
- Design preparation service is available
- Technology training is available
- Nationwide delivery and/or collection available

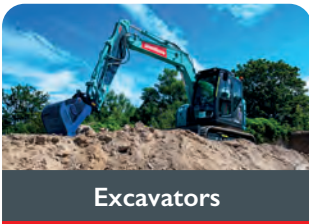
Cab Kits

Leica Cab Kits

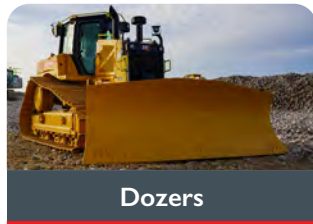
The iCG80 GNSS receiver in combination with CGA 60 GNSS antenna increases the performance of your iCON machine control solution, allowing you to work more productively than ever before. Increase dozer, excavator, drilling, excavator, wheel loader, grader and paver machine uptime.



What products do these work with?



Excavators



Dozers

Unique Machine Features:

- Easily transported by trailer.
- Ideal machine when working in confined spaces or with limited access.
- Easy to operate.
- Safe, compliant and competitive.

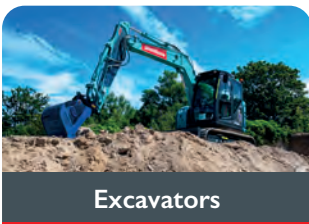
Trimble Cab Kits

Our Trimble GPS machine control cab kit hire range will give you the ability to run GPS on your GPS-ready excavator without the financial commitment of purchasing the expensive equipment yourself.

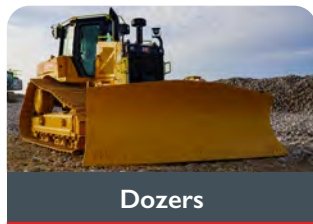
Trimble is widely recognised as one of the leading manufacturers of GPS machine control technology. The new Trimble Earthworks Platform is designed to help operators do more in less time than ever before.



What products do these work with?



Excavators



Dozers

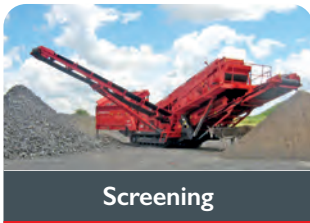
Unique Machine Features:

- Suitable for all GPS-ready excavators and dozers
- Installation support available
- Technical user support is available
- Site set-up support is available
- Design preparation service is available
- Technology training is available
- Nationwide delivery and/or collection available

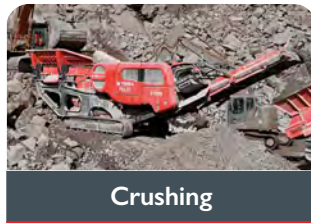
Crushing & Screening



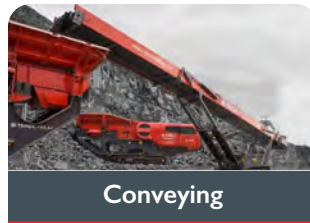
What we do



Screening



Crushing



Conveying



Nationwide Support

Plantforce Crushing and Screening offers a range of crushing, screening and conveying solutions to help to increase production during peak periods.

With a fleet of the latest crushers, screeners, and conveyors, we offer an industry leading product range designed for maximum efficiency and performance.

We believe in listening to our customers and, when required, visiting your site to ensure we offer the right machine for your job. By taking this approach our aim is to become a trusted supplier of your business that you can rely on to provide a solution that works in a timely manner with an efficient and personable service. With our team of nearly 50 fully trained and equipped field service engineers, we offer reassurance that wherever you are in Great Britain, we are on hand to keep your operation running.

Screeners

Range Overview



Heavy Duty Grids

Our heavy duty mobile grids are versatile and compact machines that can be used for primary screening and recycling applications on restricted work sites where space is at a premium.

Designed and constructed to the highest specification, they can withstand the toughest of applications from waste reclamation projects to quarry face and demolition environments, with features including heavy duty twin deck vibrating grids, wander lead operated and tracked undercarriages.



Inclined Screeners

Our range of tracked inclined screens are versatile, high capacity, robust and durable machines that can be operated in a wide range of primary and secondary screening applications.

The 6 Series range incorporates three-way and four-way split screeners that are equally suitable for processing and sizing aggregates, minerals and recycling applications.



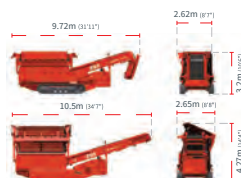
Heavy Duty Screeners

We offer arguably the largest range of mobile screening equipment for hire from leading global manufacturers.

Large or small, inclined, horizontal, 2 or 3 decks or 2, 3 or 4 way splits, we can offer screens to suit many industries and applications.

Heavy Duty Grid 595

Dimensions



Grid Size	4500 x 2755 mm
Operating Weight	19,080 Kg
Engine	Caterpillar C3.4 73.8Hp

Unique Machine Features:

- Heavy duty aggressive scalping and screening double deck grid.
- Robust T-Bar cassette top deck and meshed bottom deck configuration for accurate screening of product material.
- Hydraulic folding main conveyor and grid raise allow for rapid set-up and tear down times.



Scalping Screener 873+

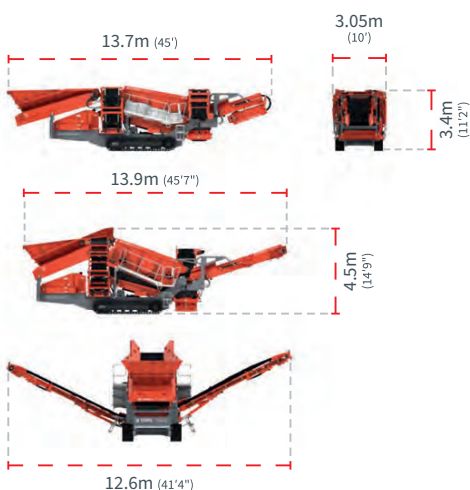
No. Stockpillers

3

Operating Weight

26,300 Kg

Transport & Working



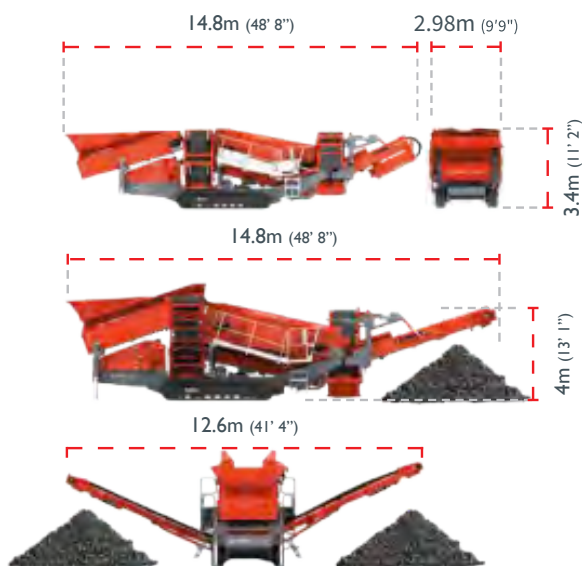
Unique Machine Features:

- Screen box angle can be hydraulically adjusted to an angle between 13° to 19°.
- Screen box discharge end raises hydraulically 500mm to facilitate mesh changing.
- Screen box can accept punch plate, cascade fingers, bofar bars and speedharps.
- Oversize conveyor angle can be adjusted from 18° to 24°.
- 1.2m wide Belt feeder complete with 7m³ manual folding hopper.



Scalping Screener 883+

Transport & Working



No. Stockpillers

3

Operating Weight

31,000Kg

Ave. Fuel Consumption

11.34/hr

Ave. Throughput

700 mtph

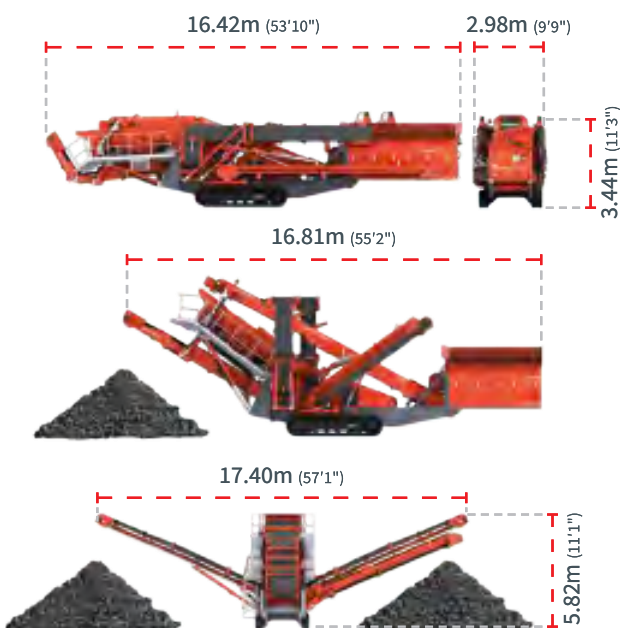
Unique Machine Features:

- Nearly blockage-free screening in the upper and lower deck.
- Flexibility to work in difficult waste processing, slag, biomass, compost, etc.



Inclined Screener 674

No. Stockpillers	3
Operating Weight	33,500Kg
Ave. Fuel Consumption	12.9 l/hr
Ave. Throughput	300 mtph

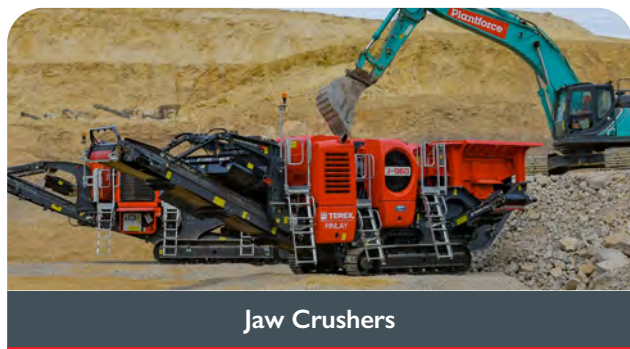


Unique Machine Features:

- L' style folding side conveyors which have allowed for the simplified folding of the 4th product conveyor.
- No transfer conveyor for oversized material from top deck, fed onto conveyor via a lined chute.
- Also included are fixed catwalks again to keep site set-up and tear down times to a minimum.
- Quick and easy to set-up.

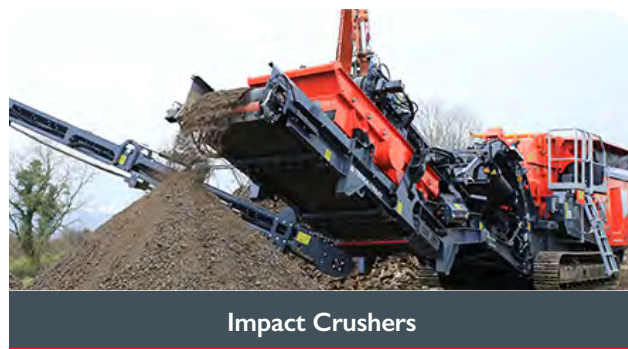
Crushers

Range Overview



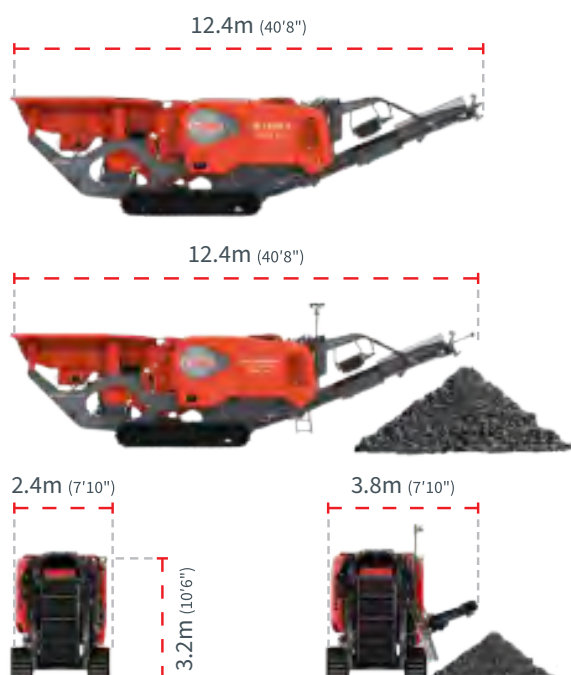
Our tracked mobile jaw crushers are renowned for their capabilities in the reduction and sizing of aggregates for construction materials and also recycling construction waste.

Our range of jaw crushers are designed to meet the toughest demands of primary crushing applications with their impressive power, reliability and proven performance.



The tracked mobile impact crushers we have available are renowned for their versatility and capabilities in the reduction and sizing of soft to medium natural granite and limestone and non-abrasive materials as well as recycling construction demolition waste.

Our range of impact crushers are ideal for producing a quality end product where grain shape, distribution and consistency is paramount.



Jaw Crusher J-960

Jaw Size	900 x 600 mm
Operating Weight	29,250Kg
Ave. Fuel Consumption	12.36 l/hr
Ave. Throughput	135 mtph

Unique Machine Features:

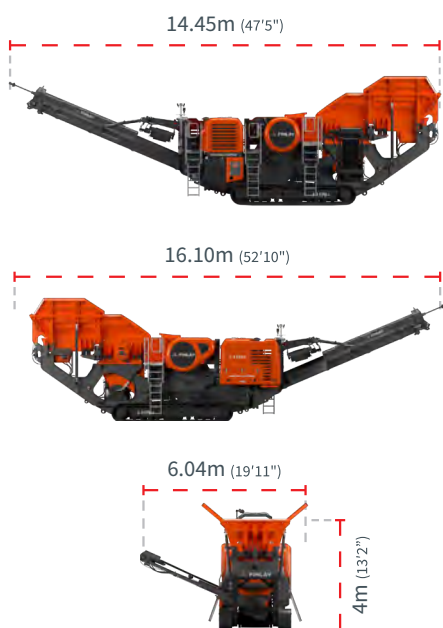
- Quick and easy to set up.
- Improved clearances and easier service and maintenance access.
- Direct drive for fuel efficiency.
- Easy to transport.



Jaw Crusher J-1170HR

Transport & Working

Jaw Size	1100 x 700 mm
Operating Weight	48,900 Kg
Ave. Fuel Consumption	17.72 l/hr
Ave. Throughput	380 mtph



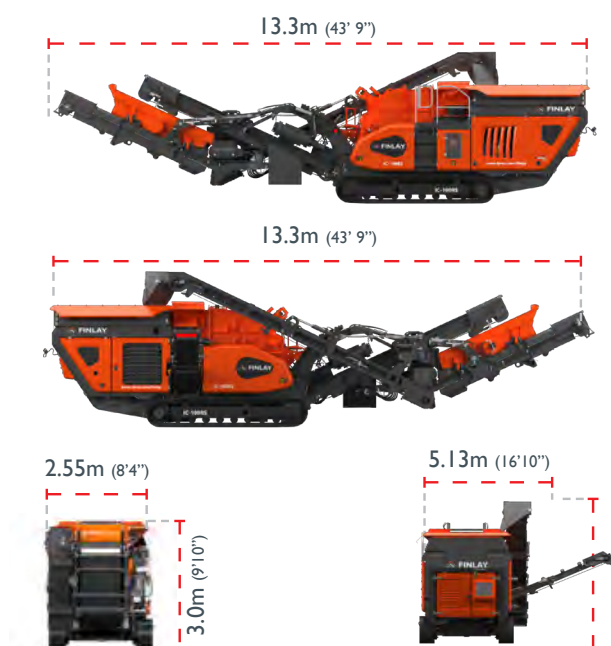
Unique Machine Features:

- Primary designed for max fuel efficiency via Hydrostatic Drive and Load Sensing Hydraulics, minimum of 13% savings.
- Improvements made for recycling by greater clearances and design.
- Hydraulic Chamber Unblock.
- Central and Low Level Hydraulic Valves for ease of maintenance.



Impact Crusher IC-100RS

Transport & Working



Rotor Size

Ø860 x 830 mm

Operating Weight

29,300 Kg

Net Engine Power

Volvo 275 hp

Unique Machine Features:

- High Productivity and Good reduction ratios.
- Direct drive along with minimum engine speeds for maximum efficiency.
- Larger grizzly area for improved removal of fines.
- New designed Terex chamber incorporating hinging inlet lid, full hydraulic aprons with optional 2nd apron auto adjust.



Impact Crusher 230R



Rotor Size	Ø860 x 830 mm
Operating Weight	29,100 Kg
Output Potential	250 tph

Unique Machine Features:

- **Compact Design:** The Cobra 230R is built with a compact design, making it easy to transport and maneuver in tight spaces.
- **Versatile Crushing.**
- The Cobra 230R features an independent pre-screen that removes the fines before they reach the crushing chamber.
- The machine can be equipped with an optional recirculation system, allowing the operator to produce a high-quality finished product with a single pass.

Conveyors



Range Overview

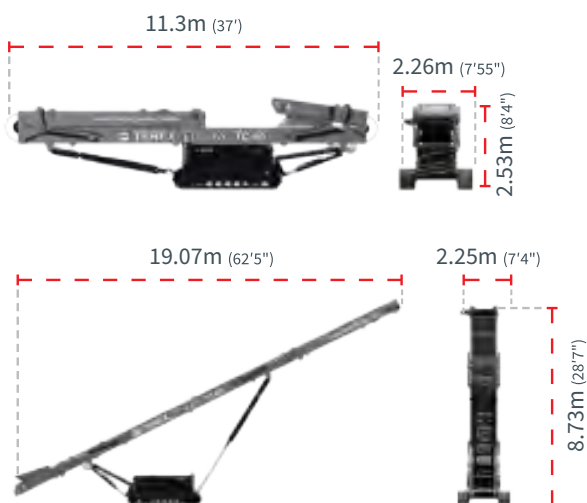
Tracked Conveyors

Our tracked mobile conveyor range allows you to move high volumes of material quickly and efficiently. Whether transferring material from one part of a process to another or simply stacking material in larger stockpiles, you will avoid the need for additional machines and operators.

Transport costs of each conveyor are kept to a minimum, due to the compact transport design. A simple yet robust design allows for easy setup and positioning to fit the customers' requirements.

Conveyor TC-65

Transport & Working



Conveyor Length	65'7"
Belt Width	42"
Operating Weight	11,300 Kg
Ave. Fuel Consumption	6.2 l/hr
Ave. Throughput	400 mtph

Unique Machine Features:

- For accepting constant flow loads.
- Wide 1050mm/42" belt.
- Max discharge heights 10m/32'10".
- Stockpile capacity 1844m³/2412yd³.

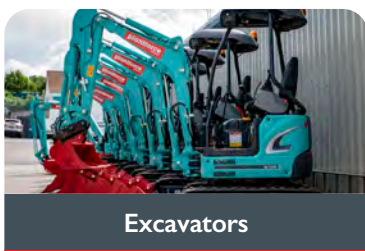
Compact



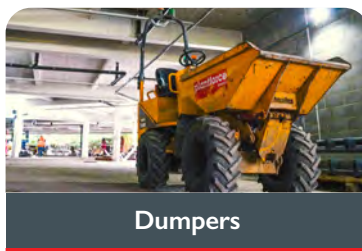
Plantforce Compact is a dedicated division of light equipment. Just ask our experts where you will find everything for your needs.

May 2019 saw the opening of a highly anticipated brand-new division of the business, Plantforce Compact Range, with a new state-of-the-art depot based in Bristol backed by a massive £2.8 million investment into new highly specked compact machinery ranging from 0.8 ton to 3t cabbed excavators, telehandlers, trench compactors, hi tip dumpers and an industry specific range.

What we do



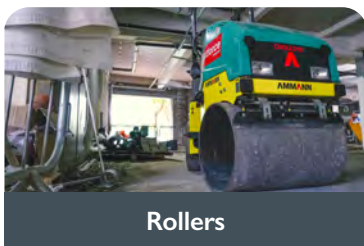
Excavators



Dumpers



Telehandlers



Rollers



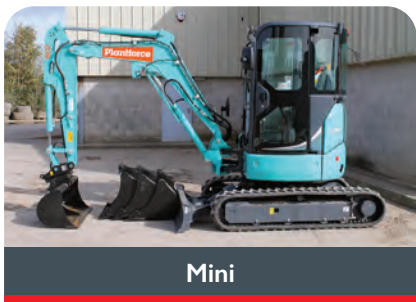
Tracked Barrows



Range Overview



Micro



Mini



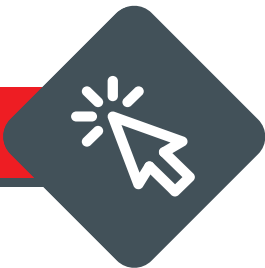
Midi

Mini excavators are particularly important to the line-up. Although used frequently for landscaping and utilities, they also have an important job to do as support on larger construction and demolition projects. Our extensive mini excavator range comprises of 10 models, ranging from the smallest micro-excavator through to the midi-class machines. Our entire fleet is fitted with hydraulic quick hitches.

Tracked Excavators 1t - 8t

Manufacturer	Model	Weight	Height	Length	Width	Maximum Dig Reach	Maximum Dig Depth
Kobelco	SK08	1035 Kg	2200 mm	2625 mm	840 mm	2830 mm	1460 mm
Kobelco	SK10	1145 Kg	2250 mm	3040 mm	1000 mm	3350 mm	2150 mm
Kobelco	SK17	1555 Kg	2350 mm	3490 mm	1320 mm	3890 mm	2150 mm
Kobelco	SK25	2780 Kg	2530 mm	4110 mm	1500 mm	4520 mm	2540 mm

To find out more information [Click here](#)

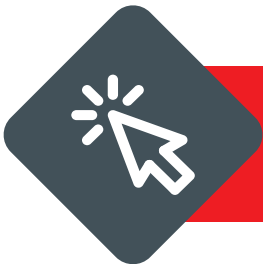


12 Man Welfare Unit



12 Man Welfare Unit

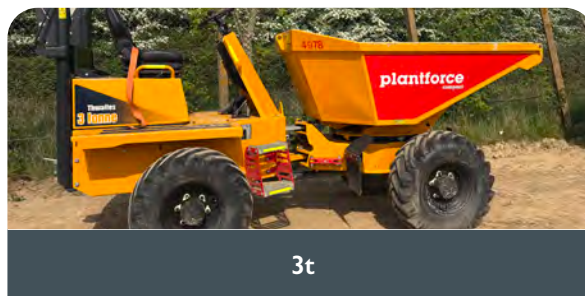
Mild steel or upgrade to stainless steel with 25 year anti-corrosion warranty	2 or 4 ram system deploys in under a minute	RedBox standard or patented Infinity with 2000 hour service intervals	Anti-vandal tow hitch cover – Flap or cowl (model dependent) with bear claw locking system	Road Light Surface mounted 12V LEDs	Ball coupling or pin & eye
---	---	---	--	-------------------------------------	----------------------------



Not sure what you're looking for?
Speak to our Compact lead
T: 07464 549 059

Compact Dumpers

Range Overview



We have the best-quality dumpers on the market.

Advanced design and investment in tooling provide today's customers with the very best products at the cutting edge of technology.

This means more than just the strength and reliability you need, it means an increased focus on customer satisfaction, safety and ergonomics across the range.

Dumper 1t



Weight	1,295 Kg
(P) Height	2,860 mm
(R) Length	3,192 mm
(E) Width	1,115 mm

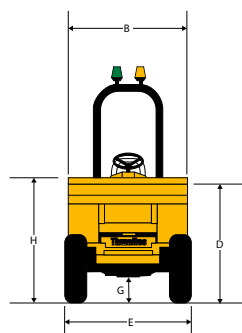
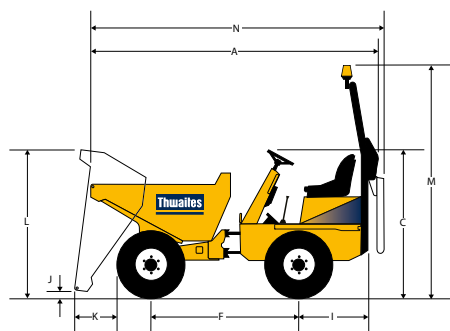
Unique Machine Features:

- Easily transported by trailer.
- Ideal machine when working in confined spaces or with limited access.
- Easy to operate.
- Safe, compliant and competitive.



Dumper 3t

Dimensions



(mm)

A	3785
B	1650
C	1981
D	1381
E	1650
F	1950
G	337
H	1524
I	1042
J	321
K	603
L	2131
M	3108
N	3950

Weight	2,080 Kg
(M) Height	3,108 mm
(N) Length	3,950 mm
(E) Width	1,650 mm

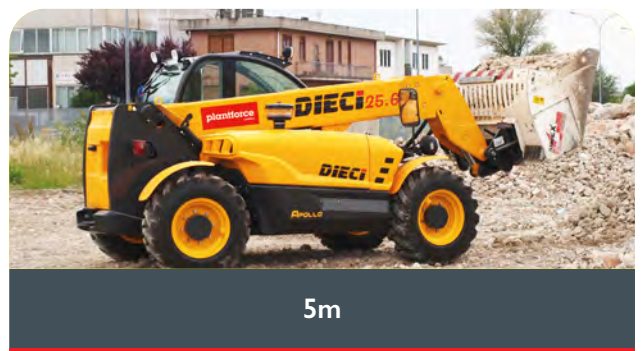
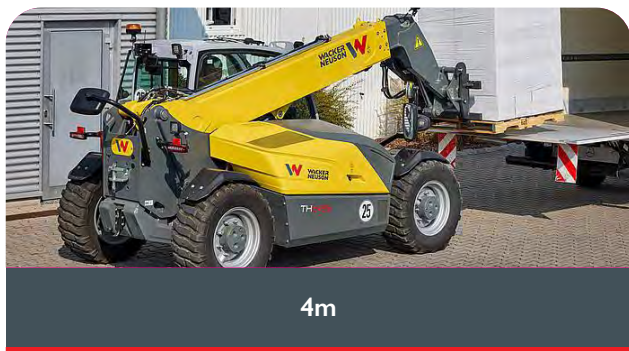
Unique Machine Features:

- Easily transported by trailer.
- Ideal machine when working in confined spaces or with limited access.
- Easy to operate.
- Safe, compliant and competitive.

Compact Telehandlers



Range Overview

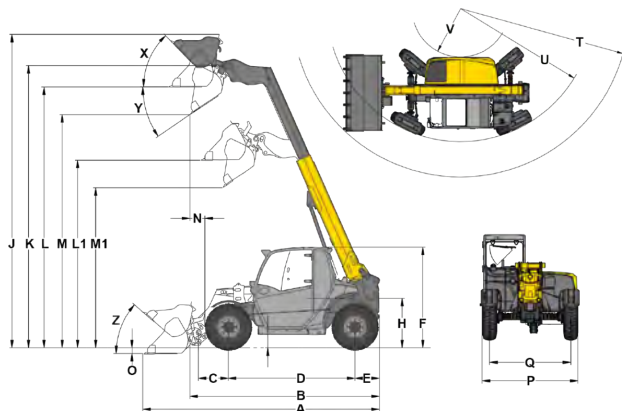


All our Telehandlers can be hired with buckets, lifting hooks and sweepers.

The telehandler can be defined as fixed or rotary depending on whether or not it is equipped with a rotating turret.

Telehandlers 4m

Dimensions



Operating Weight	2,750 Kg
Lift bucket Swivel	4.53 m
Payload Max	1,250 Kg
(A) Overall Height	5.28 m
(B) Overall Width	1.56 m
(G) Overall Length	3.94 m

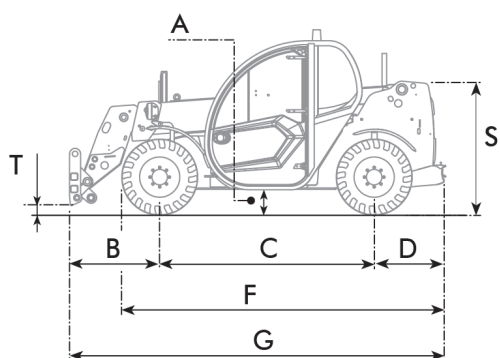
Unique Machine Features:

- Electronically controlled drive system
- Electric parking brake
- VLS (Vertical Lift System)
- Colour-oriented operating concept
- Compact and powerful



Telehandlers 5m

Dimensions



Operating Weight	4,900 Kg
Lift Height	5.78 m
Load	2,600 Kg
(A) Overall Height	1.95 m
(B) Overall Width	1.85 m
(G) Overall Length	4.12 m

Unique Machine Features:

- Unrivalled manoeuvrability, unparalleled build quality and all-day operator comfort all come as standard.
- Ideal for narrow spaces.
- Unrivalled productivity, efficiency, safety and serviceability.



Not sure what you're looking for?
Speak to our Compact lead
T: 07464 549 059

Compact Rollers



Range **Overview**



Trench



Pedestrian



Twin Drum

Our Rollers provide perfect ground contact and optimal compaction.

With a range of rollers suitable for use at every stage, from compressing the soil to producing the perfect finish for your asphalt surfaces, you can get your compaction solution with a roller to hire from Plantforce.

Trench **Roller**

Weight	1,450 Kg
Height	850 mm
Length	36 kN
Width	2400 l/min



Unique **Machine Features:**

- Articulated trench roller
- Provides perfect ground contact and optimal compaction.
- The machine and its padfoot drum provide results, even where other compactors have failed.
- Two steering cylinders help make the ARR 1575 responsive and precise, while the oscillation feature provides excellent stability on uneven surface of a ditch.

Pedestrian **Roller**



Unique **Machine Features:**

- Hold to run handle
- Fully hydrostatic system
- Smooth single drum
- Hydraulic hand brake
- Ergonomically designed, simple-to-use controls
- Nationwide delivery and/or collection available

Twin Drum **Roller**

Manufacturer	Model	Weight	Drum Width	Compaction
Ammann	ARX12	1,475 Kg	820 mm	23 kN
Ammann	ARX26	2,460 Kg	1,200 mm	47 kN
Ammann	ARX36	3,740 Kg	1,300 mm	50 kN





Range **Overview**

All our Tracked Barrows are specifically built as tracked carriers, therefore giving them many advantages over competing machines.

Making these models very popular throughout the UK and Ireland in hire fleets and on all manner of jobsites.

Tracked Barrows 800 Kg

Unique Machine Features:

- Available in the Hi tip model, self loading or simply with tipper body.
- Easy to use.
- Long lasting undercarriage, reduce need for maintenance, incredible power and reduced fuel consumption make the C85 an incredible unit.

Weight	800 Kg
Length	1,926 mm
Width	810 mm
Tip Height	1,500 mm
Capacity	800 Kg



Fuel Cube Transcube 2000L Static



The Transcube 2000L Static fuel cube is a large, stationary fuel storage tank designed for safe and efficient fuel storage on job sites, remote locations, and other industrial settings.

With a capacity of 2000 litres, it provides a significant amount of fuel storage without the need for multiple smaller tanks.

Model	Model	Weight (Empty)	Capacity
Electric Pump	10TCG	540 kg	949 Litres
Hand Pump	10TCG	540 kg	949 Litres
Electric Pump	20TCG	823 kg	2,091 Litres
Hand Pump	20TCG	823 kg	2,091 Litres



JCB Hydraulic Powerpacks



JCB hydraulic powerpacks are compact and portable units that provide a reliable source of hydraulic power for various applications.

These powerpacks are designed to be durable, easy to operate, and highly efficient, allowing for consistent performance in the most demanding environments.

Model	Weight	Max Pressure Bar - (Psi)
Beaver	66 Kg	138 (2000)



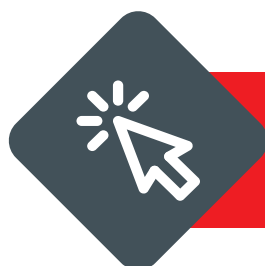
Dust Suppression Unit BBW35KPE+ES



The Brendon BBW35KPE, BBW35KPE+ES & BBW30KLN+ES Bowser washers are designed and built for the toughest of cleaning in remote and difficult to access locations and used in many industrial applications.

With a tank capacity of 940 litres giving an approximate cleaning time of 1 ½ hours on a full tank, our Pressure Washer Trailer will complete most of your cleaning requirements.

Weight	Water Tank	Max Pressure Bar - (Psi)
500 Kg	940 litre water tank	240 BAR / 3500 PSI



Not sure what you're looking for?
Speak to our Compact lead
T: 07464 549 059

Hydraulic Attachments



Now with over 360 items in the fleet, Plantforce stands as one of the largest attachment hire fleets in the country. Plantforce Attachments offer hydraulic breakers, grabs, grapples, shears, munchers, crusher buckets, riddle buckets, ripper teeth, pallet forks and much more. With over 25 years of expertise in the plant hire industry Plantforce is a company that is well known and appreciated for its wide and safe range of specialist industry attachments.

Hydraulic **Attachments**



What we do



Breakers



Selector Grabs



Compactor Plates



Augers



Pallet Forks



Crushing Buckets



Screening Buckets



Rock Wheels



Pulverisers



Multi Processors - Shears



Tilt Buckets



Mulchers



Tin Bin



Piling Hammers



Breakers 0.8t - 50t

DAEMO

Our Daemo breakers all come with an anti-blank firing system

- Products are ranging in size from 0.8t to 50t. Auto grease systems are available on selected breakers which allows you to work without having to stop and grease it several times a day, also from 7t and above they come with a 2 stroke selection system which can drop fuel consumption and improve performance.

Model	Operating Weight	Overall Length	Working Pressure	Suitable Excavator
B06	68 Kg	932 mm	6~12 MPa	0.8~1.2 ton
B30	190 Kg	1,352 mm	8~12 MPa	1.2~4 ton
B50	333 Kg	1,603 mm	10~14 MPa	3~8 ton
B70	431 Kg	1,805 mm	10~14 MPa	5~8 ton
B140	929 Kg	2,225 mm	12~16 MPa	10~15 ton
B210	1,738 Kg	2,764 mm	13~17 MPa	18~25 ton
B360	2,937 Kg	3,200 mm	14~18 MPa	28~36 ton
B450	3,713 Kg	3,595 mm	14~18 MPa	40~50 ton
B650	4,380 Kg	3,766 mm	14~18 MPa	42~81 ton

Breakers 1t - 80t

NPK®

A better design that combines efficiency, reliability and serviceability

- Standard on all medium and large NPK hydraulic hammers, our shock-absorbing mounting bracket uses special heavy-duty rubber mounts to absorb shock, recoil and impulse vibration.
- The unique one-piece design eliminates the need for mechanical springs and overly heavy mounting brackets. The net result is minimization of machine wear and improved operator comfort for greater reliability and productivity.

Model	Operating Weight	Overall Length	Working Pressure	Suitable Excavator
PH-06	94 Kg	991 mm	20 ~ MPa	1~2 ton
PH-07	112 Kg	1,035 mm	21 ~ MPa	1.5~3 ton
PH-1	162 Kg	1,154 mm	21 ~ MPa	2~3.5 ton
PH-2	200 Kg	1,240 mm	21 ~ MPa	3~5.5 ton
PH-3	314 Kg	1,395 mm	21 ~ MPa	4~9 ton
PH-4	465 Kg	1,570 mm	21 ~ MPa	6~12 ton
GH-6	851 Kg	1,931 mm	21 ~ MPa	12~18 ton
GH-9	1,482 Kg	2,356 mm	21 ~ MPa	17~24 ton
GH-15	2,618 Kg	2,933 mm	21 ~ MPa	28~45 ton
GH-18	3,067 Kg	3,056 mm	21 ~ MPa	38~50 ton

Selector Grabs



Selector Grabs 5t - 40t

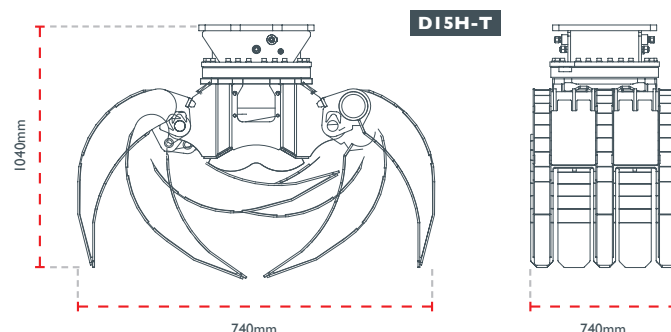
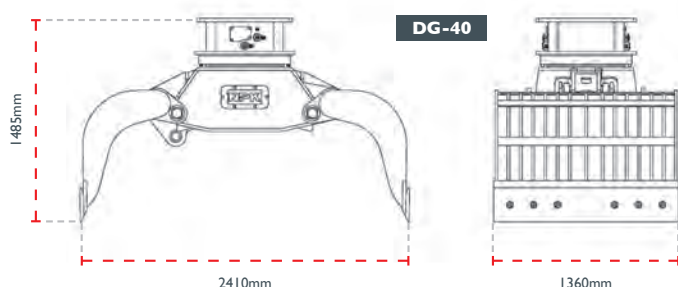
NPK®

Selector grabs are commonly used in construction and industrial sites for various purposes. These versatile machines come with a wide range of attachments that allow them to tackle different tasks efficiently.

Model	Operating Weight	Capacity	Jaw Opening	Suitable Excavator
DG-9	450 Kg	180 L	1,632 mm	5~9 ton
DG-16	875 Kg	425 L	1,850 mm	10~16 ton
DG-20	1,230 Kg	500 L	2,050 mm	14~20 ton
DG-30	1,850 Kg	800 L	2,410 mm	18~30 ton
DG-40	2,050 Kg	900 L	2,410 mm	25~40 ton

KINSHOFER

Model	Operating Weight	Capacity	Jaw Opening	Suitable Excavator
D15H-T	1,100-1,500 Kg	3,000 KG	740 mm	11~15 ton



Compactor Plates



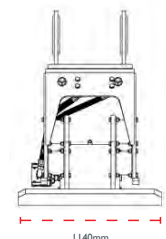
NPK®

Compactor Plates 2.5t - 63t

The NPK range of compactor plates are designed and built to meet today's demands for greater on-site productivity, expanding and enhancing the versatility of your excavator

- NPK's versatile Construction Compactor can work productively virtually anywhere your excavator can reach. In trenches, over and around pipe, to the top of piling and sheeting. Next to foundations and around obstructions. Even on steep slopes or rough terrain where conventional rollers and other machines either can't work or would be hazardous to try.

Model	Operating Weight	Impulse Force	Length X Width	Suitable Excavator
C-2D	172 Kg	1,600 Kg	635 x 320 mm	2.5~5.5 ton
C-4C	436 Kg	3,600 Kg	860 x 580 mm	4.5~11.5 ton
C-6C	778 Kg	7,300 Kg	1,020 x 740 mm	7~20 ton
C-8C	1,056 Kg	11,000 Kg	1,170 x 860 mm	14~34 ton
C-12C	2,030 Kg	20,400 Kg	1,470 x 1,140 mm	35~63.5 ton



Mulcher



Mulcher 3.5t - 15t



Suitable for excavators and skid steer loaders, the Variable Mulcher provides a working width of up to 1.5m.

Both the VMI000 & VMI500 have the unique feature of being able to change the drum on-site, adapting quickly between parent machines for maximum versatility & flexibility on the job, without having to return to the yard. The ability to attach a skid steer frame and excavator hitch at the same time, along with a removable pressure gauge & push bar allows for easy adaptation between parent machines when out on site. The fixed tungsten teeth drum gives a robust blunt cutting edge for grinding through thick timber, hedges and branches. The swinging hammer teeth drum gives a cleaner, more precise cut for dense bushes, smaller trees & even slashing grass.

Model	Operating Weight	Overall Length	Working Pressure	Suitable Excavator
TC2-80	242 Kg	800 mm	250 bar	3.5~6.5t
VMI000	400 Kg	1,000 mm	160-180 bar	5-10t
VMI500	800 Kg	1,500 mm	220-240 bar	10-15t

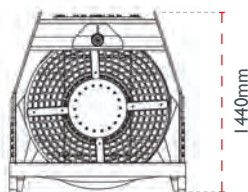
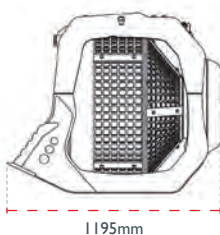
Screening Buckets



Screening Buckets | 14t - 20t

Model	Operating Weight	Load Capacity	Dimensions	Excavator
MB-S14 S4	1.1 t	1.10 m ³	1,195 x 1,440 mm	14~20 ton

MB - S14



Perfect for on-site cleaning and screening of inert materials

- The MB screening bucket is a piece of equipment that works by taking advantage of the hydraulic system of the excavators to which it is fitted.
- It has many areas of applications: from building demolitions in general, to the requalification of former industrial and urban areas to the processing of excavation materials, from the earth movement sector to road works, from quarries to mines, from environmental reclamation to applications on rocky soil.

Piling Hammers



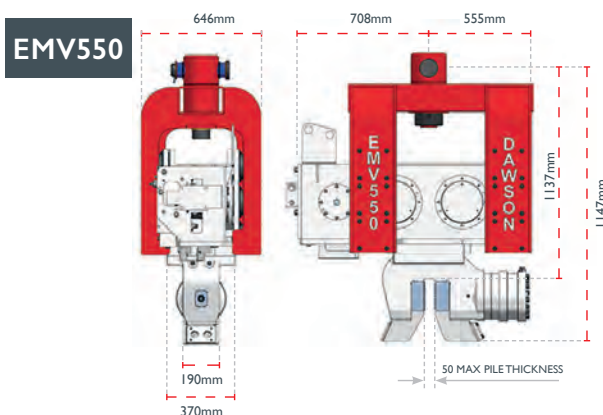
Piling Hammers 7t - 55t



Model	Max Hydraulic Flow	Total Mass	Clamp Force	Suitable Excavator
EMV220	250 L/min	580 Kg	26.5 t	7~22 ton
EMV300	250 L/min	965 Kg	36 t	12~35 ton
EMV550	400 L/min	1,500 Kg	66 t	30~55 ton

Dawson excavator mounted vibrators have been designed specifically to work in place of an excavator bucket to drive and extract piles

- The pile can be lifted to vertical using the built-in lifting chain where it is then gripped tightly in a powerful hydraulic jaw. Once secured, the pile is then vibrated with high frequency vibrations so as to 'fluidise' the soil resisting the pile.
- Down-crowd force applied by the excavator boom, coupled with the self-weight of the pile and the vibrator, provides sufficient force to push the pile into the ground. Naturally, the process works in reverse for pile extraction. The equipment offers a highly productive and cost effective piling rig based around a standard, readily available excavator.



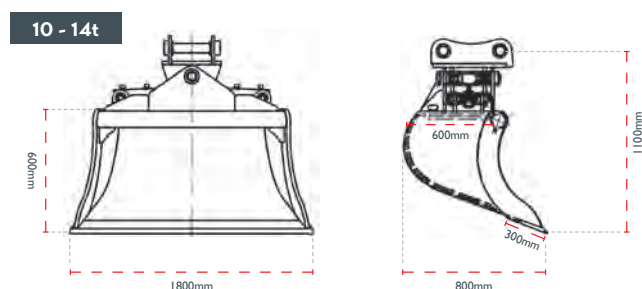
Tilt Buckets



Tilt Buckets 5t - 22t

The Strickland heavy duty hydraulic tilt buckets have been designed and manufactured in the UK and are all CE marked to ensure they will perform in the very toughest of operating environments

- This heavy duty hydraulic tilt bucket operate with one hydraulic piston. Our hydraulic tilt buckets are hugely popular, available for all makes and models of excavators.



Model	Bucket Width	Suitable Excavator
5-8t	1,520 mm	5~8 ton
10-14t	1,800 mm	10~14 ton
20-22t	1,850 mm	20~22 ton

Crushing Buckets



Crushing Buckets | 14t - 30t



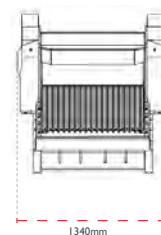
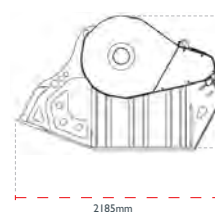
Perfect for on-site crushing of inert materials, the MB Crusher Bucket takes advantage of the hydraulic system of the excavators

The range is suitable for 14 - 30 ton machines.

It has many areas of applications: from building demolitions in general, to the reclamation of former industrial and urban areas to the processing of excavation materials, from the earth movement sector to road works, from quarries to mines, from environmental reclamation to applications on rocky soil.

Model	Operating Weight	Load Capacity	Working Pressure	Excavator
BF60	1.8 ton	0.55 m3	215 bar	14 ton
BF90	3.6 ton	0.90 m3	220 bar	20~30 ton

BF90



Rock Wheels

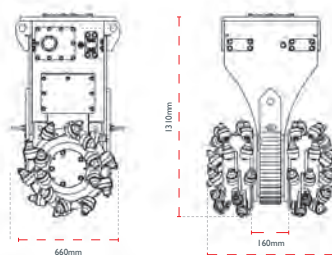


Rock Wheels 6t - 30t

When your application requires small fixed-section trenching i.e. for the laying of utilities up to a maximum depth of 800mm and width of 30-250mm asphalt, concrete and rock Simex T wheel excavators are your solution

- With high level of visibility, wheel protection at all depths and hydraulic piston motors with direct wheel drive provide you with safety and high performance for the works requiring cutting small sections of trenches on hard or compacted surfaces.

TF1100



Model	Operating Weight	Drum Width	Working Pressure	Excavator
TF400	476 Kg	635 mm	5,100 psi	6~12 ton
TF600	635 Kg	711 mm	5,100 psi	9~16 ton
TF850	1,134 Kg	812 mm	5,100 psi	14~20 ton
TF1100	1,451 Kg	864 mm	5,100 psi	20~34 ton



Tin Bin TC2

The tinbin TC2 allows you to excavate quickly, cleanly and precisely. Dry suction excavation means you can dump on site and avoid slurry disposal charges. Air is non-conductive and allows you to stay on site longer, boosting productivity!

Model	Operating Weight	Overall Length	To Suit Max Fork Size	Suitable Excavator
TC2	1,300 Kg	1,800 mm	280 bar	20t-30t



Pulverisers

Pulverisers

10t - 38t

NPK®

Pulverisers crush and process concrete on site separating it from re-bar and leaving behind smaller chunks, making the material easier for processing and manoeuvring

- We have fixed jaw or rotational pulverisers available for hire.

Model	Operating Weight	Max Jaw Opening	Working Pressure	Excavator
G120	1,160 Kg	775 mm	28 MPa	10~17 ton
G18	2,054 Kg	823 mm	26 MPa	17~22 ton
G28	2,960 Kg	1,000 mm	28 MPa	25~38 ton

DAEMO

Model	Operating Weight	Max Jaw Opening	Working Pressure	Excavator
DMP140	1,350 Kg	867 mm	31 MPa	14~22 ton

Multi Processors

Multi Processors 20t - 50t

NPK®

Model	Operating Weight	Max Jaw Opening	Working Pressure	Excavator
M20	Pulveriser 2,100 Kg	Pulveriser 770 mm	25 MPa	17~24 ton
	Shear 2,100 Kg	Shear 540 mm		
	Cracker 2,000 Kg	Cracker 940 mm		
M28	Pulveriser 3,150 Kg	Pulveriser 910 mm	25 MPa	28~40 ton
	Shear 3,130 Kg	Shear 638 mm		
M38	Pulveriser 4,150 Kg	Pulveriser 1140 mm	25 MPa	35~45 ton
	Shear 4,250 Kg	Shear 735 mm		

Our NPK multi processors have different jaws to suit different applications

- The NPK multi processor has a pulveriser jaw for cutting through re-enforced concrete, a blade for cutting re-bar and a 360-degree rotation.
- NPK source and build to the highest quality to ensure high productivity and minimal down time.

DAEMO

Features Quick Change Jaws, replace within 30 minutes!

Model	Operating Weight	Max Jaw Opening	Working Pressure	Excavator
DMP200Q	Pulveriser 2,200 Kg	Pulveriser 843 mm	31 MPa	20~30 ton
	Shear 2,037 Kg	Shear 393 mm		

Augers



Augers 1.5t - 20t



Model	Operating Weight	Torque Range	Speed Range	Excavator
X2500	48 Kg	830 - 2,847 Nm	36 - 87 rpm	1.5~3 ton
8000 MAX	116 Kg	2,717 - 8,152 Nm	33 - 70 rpm	6~8 ton
15000 MAX	173 Kg	5,024 - 15,071 Nm	20 - 43 rpm	10~15 ton
20000 MAX	268 Kg	13,043 - 19,564 Nm	16 - 33 rpm	13~20 ton

This range of augers have been specifically designed for use on excavators between 1.5t - 20t and large backhoes

- They are available with a number of wearpart combinations, catering from soft grounds all the way to mixed rocky grounds and even permafrost.
- All Auger Torque augers are built from high grade steel and incorporate many features that will allow you to work more efficiently and will make your job easier. Shallow pitch flights ensure they will cut with maximum efficiency and, most importantly keep the spoil on the flights when removed from the hole.

8000 MAX



Earth Drill Hitches

ALSO AVAILABLE

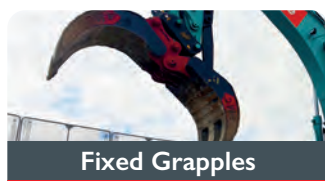
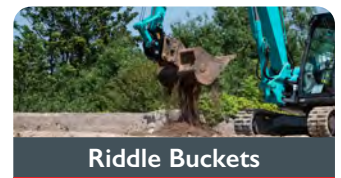
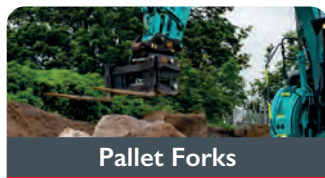


Augers and Extensions

Non - Hydraulic Attachments



What we do



Not sure what you're looking for?
Speak to our Attachments lead
T: 07464 928 661

To find out more information [Click here](#)



Pallet Forks



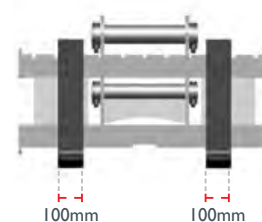
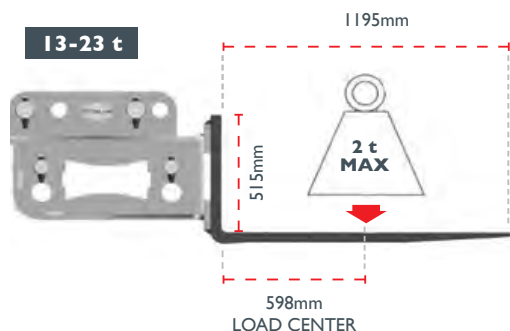
Pallet Forks 5t - 23t

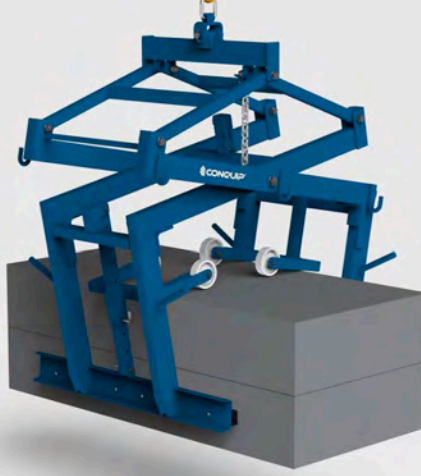


Model	Operating Weight	Depth	Width	Suitable Fork Lift
5-8t	253 Kg	1,195 mm	1,000 mm	5~8 ton
13-23t	362 Kg	1,195 mm	1,000 mm	13~23 ton

The Strickland range of fork attachments are designed and manufactured in the UK to CE specifications

- All our pallet forks come with adjustable pins for use with various hitches, we also offer a wide range of fork extensions, please get in contact for more information.





Block Grabs



Block Grabs 5t - 8t

The Conquip Block Grab is a mechanical grab for materials lifting blocks and bricks, commonly with an excavator but sometimes with a crane. It is also suitable for handling all types of concrete products, such as concrete slabs, kerb stones and paving blocks. Top arms and load levelling arms increase durability, and safety while the automatic catch mechanism enables a single operator to stack or unstack loads.

Model	Operating Weight	Overall Length	Working Load Limit	Suitable Excavator
CA 105-01000	250 Kg	1,560 mm	1,800 Kg	5~8 ton



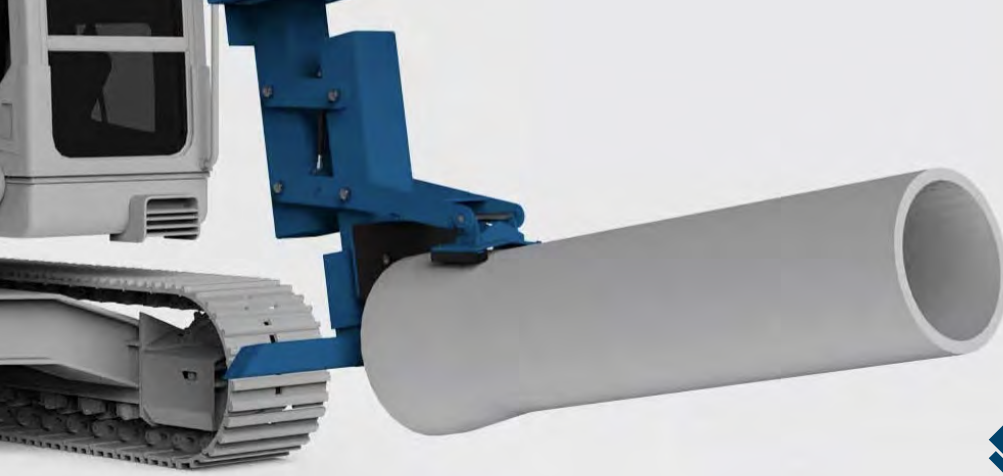
Kerb Lifters

Kerb Lifters

8t+

The Kerb Lifter, or mechanical kerb grab, is designed for the safe handling of kerbs, steps and other pre-formed sections. It can be machine lifted by crane or other suitable lifting apparatus, by a central lifting point, or manually lifted using the handles.

Model	Operating Weight	Overall Length	Working Load Limit	Suitable Excavator
MH701AA	34 Kg	675 mm	600 Kg	8t +



Pipe Lifters



Pipe Lifters | 13t - 22t

The Conquip Excavator Mechanical Pipe Lifter is an excavator attachment with mechanically operated grip and release mechanism used for unloading pipe sections from delivery vehicles, transporting them around site and placement in trenches. A safe alternative to other pipe lifting methods, it avoids the need for ground workers to be in the trench during pipe installation and replaces traditional slinging methods for unloading trucks.

MODEL	OPERATING WEIGHT	OVERALL LENGTH	WORKING LOAD LIMIT	SUITABLE EXCAVATOR
EA012 - 04000	290 Kg	2,910 mm	4,000 Kg	13t - 22t

Compaction Wheels



Compaction Wheels | 13t - 22t



Model	Operating Weight	Overall Length	Compaction Width	Suitable Excavator
EA023	510 Kg	1,010 mm	1,800 Kg	13t -22t



Fork Extensions



Fork Extensions

Fork Extensions extend the forks of a forklift or telehandler to increase its capacity and provide a simple, effective solution for stabilising long and awkward loads. This attachment is easy to fit and increases the versatility of your forklift or telehandler, saving on hiring other machinery to move abnormal loads.

Operating Weight	Overall Length	To Suit Max Fork Size
68 Kg	1,800 mm	100 x 50 mm



Not sure what you're looking for?
Speak to our Attachments lead
T: 07464 928 661

To find out more information **Click here**



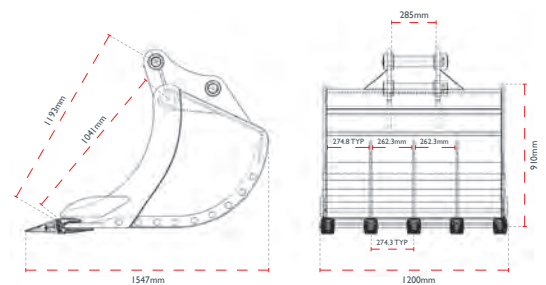
Riddle Buckets



Riddle Buckets 5t - 45t

Well suited to rocky soils, our riddle buckets are manufactured to work with machines from 5 tonne to 45 tonne, with various sizes from 24 to 72 inches

- We have numerous buckets in stock with different specs, please contact us for more information.

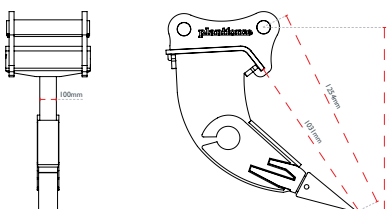


Ripper Teeth



Ripper Teeth 8t - 45t

Here at **Plantforce Attachments** we are always adding to our stock so please feel free to call us and see what's the latest we have available.



These are designed and manufactured to help reduce wear on both your machine and buckets

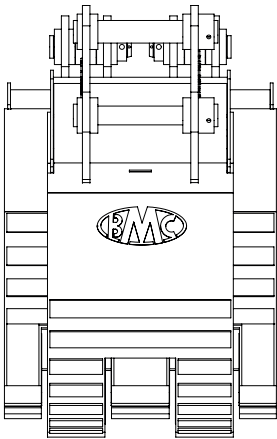
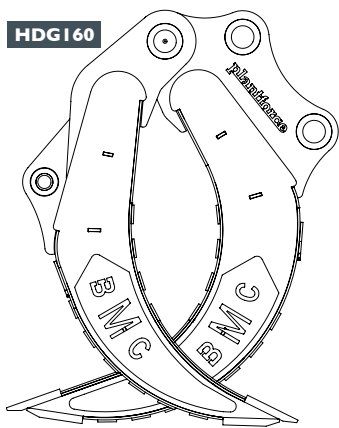
- The sloping and penetrative design 'rips' up hard soil and rock with ease, making digging easier. This helps reduce stress on buckets and machines, making the process more economical (as less stress on parts of the excavator and buckets inevitably means less down time).
- Rippers are available for all machines from 8 tonne to 45 tonne and can be manufactured with a variety of wear parts added to suit your application.

Fixed Grapples



Fixed Grapples 20t - 50t

Model	Operating Weight	Full Open	Suitable Excavator
HDG110	1,225 Kg	2,413 mm	18~22 ton
HDG160	2,645 Kg	3,607 mm	40~52 ton



Made with abrasion resistant, high-tensile strength steel for durability, boxed tines for increased strength, maximizes production while minimizing downtime

- Replaceable bearings in main hinges with O-rings to protect the pins by keeping grease in and dirt out for a longer life span. Available with optional wear package, ideal for demolition, scrap handling, land clearing, and refuse handling.

Notes

Notes page with horizontal dotted lines for writing.

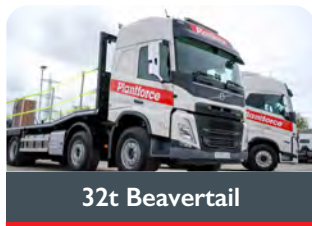


Let Us Move Your Machines.

The Plantforce Heavy Haulage division is dedicated to providing its customers with the highest level of service and safety when transporting plant or heavy equipment. The service can provide a one-stop shop for all your transportation needs, with a vast range of vehicles on offer, from large trucks and trailers to small vans. The team of experienced, qualified and highly skilled drivers are committed to delivering the best experience when completing your heavy haulage project.



18t Beavertail



32t Beavertail



44t - 65t Tractor Unit



100t - 120t Tractor Unit

Introducing A New Plant and Machinery Haulage Solution

With a fleet comprising of general plant vehicles ranging from 4 & 8 wheel rigid beavertails to 3 & 4 axle step frame trailers, we can cater for both standard Construction and Use Loads (C&U) and abnormal loads (STGO). As well as this all drivers carry a tablet which allows them to capture proof of delivery / collection with signatures and photos via the driver app.



Euro 6 Compliant

All our trucks are fitted with the latest standards that all new engines must be compliant with.



Tracking Systems

Fitted with tracking systems to provide live vehicle locations and traffic information.



Volvo Connect

Fitted with Volvo Connect Telematics which enables us to track fuel consumption and data.

Fully Compliant Transport Solutions



CLOCS Champion & FORS
Silver Accreditation... but
we are going for Gold!



NPORS Loader
Securer / Plant Mover
qualified drivers



TFL, FORS & HS2
Compliant Fleet



Safety

Plantforce Heavy Haulage is FORS Silver accredited and CLOCS Champion, demonstrating our exemplary levels of best practice in safety, efficiency and environmental protection.

All fleet vehicles are equipped with the following:

- ✓ 360 Degree camera systems
- ✓ In Cab cameras
- ✓ Fall restraint systems
- ✓ Audible Warning System, Blind Spot Aids & Close Proximity Sensors

Our drivers and staff are highly experienced and hold NPORS Plant Loader / Securer (STGO) and Plant Mover qualifications.



Our Depots

plantforce

HQ - Weston Depot

Winterstoke Road
Weston Super Mare
Bristol BS23 3YW
01934 640 840

Bristol Depot

Plantforce Compact
South Liberty Lane, Bristol BS3 2UQ
01934 640 840

Cornwall Depot

Moordown, St Ives
Liskeard PL14 3NA
01579 383 185

Devon Depot

Chancel Lane, Pinhoe
Exeter EX4 8JT
01392 344 880

East of England Depot

Babraham Road, Fulbourn
Cambridge CB21 5HR
01934 640 840

London Depot

Civic Way
Ruislip HA4 0YS
01934 640 840

Midlands North Depot

Diamond Way
Stone ST15 0SD
07000 606 606

Midlands South Depot

Snitterfield Road, Bearley
Stratford-upon-Avon
Warwickshire CV37 0EX
01213 710 900

North West Depot

Park Lane Industrial Estate
Wigan Road
Ashton in Makerfield WN4 0BZ
01934 640 840

Scotland Depot

Ashley Drive, Bothwell
Glasgow G71 8BS
07000 606 606

Somerset Depot

Unit 3, Dunball Industrial Estate
Bridgwater, Somerset TA6 4TP
01278 558 760

