

A little bit about us....



plantforce



One Brand. One Team. One Plantforce.

Plantforce are a national supplier of technology advanced plant hire machinery tailored to the construction, rail, major project and energy industries.

Who we are

Established as regional plant hire company in 1999, we have grown year on year to now provide one of the largest and most diverse ranges of machinery and skilled operators in the UK. With divisions such as Plantforce Compact, Attachments, Digital and Crushing and Screening, we are able to meet industry needs, with industry specific equipment.

While expansion has seen us grow nationally and provide plant from the top of Scotland to the most southern parts of Cornwall, we have kept the companies tradition of servicing all projects with the same attention to detail.

Building our business around the needs of our customers has given us the foundation to service major developments, such as the construction of the Hinkley Point Nuclear Power Station. This project was

Europe's largest construction site and we are proud to support it's progress, having been Principle Supplier for over 9 years, we have had more than 300 items of plant on hire and over 200 working personnel onsite at peak times. It has given us valuable experience which we are able to pass on to every client when they choose us.



"A Company is only as good as its people"

Claire Trott - Founder Executive Director



*"*Whilst experience and service is key, we also look to the future. Our progress with machine control technology, people – plant interface and telematic reporting has seen the company reach new limits regarding innovation and enhanced customer fulfillment.*"*

Major Projects



HS2

Plantforce secured Tier 1 supplier status for the largest earthmoving project in Europe, HS2. One of only three appointments to this status by principal contractor EKFB, Plantforce supply a full range of earthmoving equipment and digital technology solutions. With phase one of HS2 set to create 140 miles of dedicated track between London Euston and Curzon Street station in Birmingham, the project requires 22,000 workers to complete 130 million tonnes of earth to be excavated, spread over 200

construction sites. EKFB is a joint venture between major civil engineering and construction companies: Eiffage, Kier, Ferrovial and BAM. It has been appointed by HS2 to deliver civil engineering works across an 80-kilometre section of the new high-speed rail link between the Chiltern Tunnel and Long Itchington. The section will include 15 viaducts, 6.9 kilometres of green tunnels, 22 kilometres of road diversions, 81 bridges and around 30 million cubic meters of excavation.



Hinkley Point C

Hinkley Point C is the largest project that the South West has ever seen and Plantforce Rentals are very proud of the fact that we were the first Plant Hire Company to start this prestigious construction project.

With over 9 years on-site experience of working in the nuclear industry, Plantforce have a dedicated on-site Project Manager as well as our own Health and Safety Officer.

Situated just off junction 23 of the M5 in Dunball industrial estate, Plantforce is ideally positioned next door to the new Park and Ride and Freight Management Centre for Hinkley Point C.

Fully committed on employing local labour for Hinkley Point C, Plantforce have adopted a stringent vetting process to meet the requirements needed to be able to work on a Nuclear Power Station with a particular emphasis on Health and Safety. All of our fully qualified and security passed Operators has gone through the necessary training, and have the accreditation required to be able to work on this Nuclear Site and all our

machines are compliant to Nuclear Site Health and Safety regulations. As well as a full range of excavators Plantforce also have a huge array of first class attachments available from our Bridgwater depot.

Working closely with the Somerset Chamber of Commerce and the Hinkley Supply Chain, Plantforce are an EDF Approved supplier and committed in providing a first class service with the best machinery on the market.



Overview of Services



Operated plant hire

At Plantforce, we have our own C C N S G-cleared, C P C S and P T S-accredited plant operators, so we're able to provide the perfect solution whether you're looking for self-drive or operated equipment. Operator assessments ensure the best quality operatives are supplied and high levels of competence are maintained.

Self-drive plant hire

At Plantforce, we have one of the largest and most diverse ranges of machinery in the UK. Our team of qualified engineers perform rigorous checks, both pre and post hire to ensure that our machines arrive in the best possible condition. We also have a proactive complaints process, which is very much a collaborative approach to dealing with any issues that might arise.

HIRE INSIGHTS

Take control with one easy to use, in-depth platform

HIRE Insights gives you total visibility of the data from your projects. Presenting this data as meaningful information from one intuitive online platform, you can easily identify potential operational improvements.

From identifying reductions in your carbon emissions, improving your operational efficiency and saving costs, your team will have the information they need to make decisions based on facts, rather than anecdotal feedback.



Plant

SELF DRIVE PLANT HIRE



WHAT WE DO



TRACKED EXCAVATORS



DOZERS



ADTS



LOADING SHOVELS



ROLLERS



SITE DUMPERS



WHEELED EXCAVATORS



TELEHANDLERS

What we do

A fuel-efficient, fresh and reliable fleet at your fingertips

As the cornerstone of the Plantforce offering, our extensive fleet of excavators, dumpers, rollers, dozers and much more for use in a wide range of applications such as construction, demolition, recycling and earthworks projects, to name a few.



Got the team, need the machine?

Our self-drive plant hire service allows customers to utilise their own qualified operators to operate a machine hired from Plantforce and reduce the total cost of the rental.

Self-drive plant hire is available across our entire range of equipment. It is perfect for businesses that either do not want the cost of purchasing their own equipment or need a temporary increase in the number of machines.

With delivery available throughout the UK, you can get a reliable and fuel-efficient machine for your project as soon as the next day.

You have the reassurance that our fleet is backed up by our team of qualified mobile service engineers. You can trust that if there is an issue, we will promptly respond, getting you up and running again.

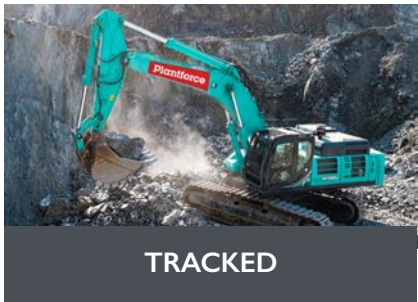




OPERATED PLANT HIRE



Range Overview



TRACKED



WHEELED



LONG REACH



DEMOLITION

Plantforce Operations Database

With the introduction of the Plantforce Operations Database “POD”, not only does this allow us to record all of our operatives details but to act as a competency and training matrix also, highlighting the expiry dates of not only their current competency but any additional training and qualifications such as safety critical medicals & bespoke inductions etc.

The development and introduction of the tailor-made ‘POD’ platform has proven excellent for not only resource & managing the operators in terms of competencies for all machines, but it gives a full overview of the capabilities in its entirety as well as the operators experience and scoring from previous experiences on different job types, demonstrating to our clients the operators proven track record and levels of ability.

POD is also available to all of our Clients that request it giving access to all of the operators allocated to them at any one time across the nation with the same search ability to allow continued transparent analysis of each operator throughout.

Furthermore to reinforce our continued analysis and support of our workforce we have a dedicated member of staff that carries out site visits to conduct competency tests on all site personnel.

This experienced member of staff prioritises visiting operators with CPCS cards to verify the individuals ability using the specific machine they are working on as well as reviewing the need for further training or areas they feel up-skilling would be beneficial. We believe that this further level of support is extremely beneficial to both the client and ourselves cementing the need for continuity of competencies.



Giving you access to over 2000 qualified and vetted operators.

At Plantforce, we have our own C C N S G-cleared, C P C S and P T S-accredited plant operators, so we’re able to provide the perfect solution whether you’re looking for self-drive or operated equipment. Operator assessments ensure the best quality operatives are supplied and high levels of competence are maintained.

In addition to our directly employed operators, we also hold a comprehensive database of operators, what machines they are

qualified to operate and reviews on their performance at previous jobs for you to utilise.

With all our operators’ information available at the click of a mouse via the Plantforce POD online portal, your sites will have all the information they require, when they need it.

MANUFACTURER	MODEL	WEIGHT	HEIGHT	LENGTH	WIDTH	MAXIMUM DIG REACH	MAXIMUM DIG DEPTH
Hyundai	HX140	14,210 Kg	3110 mm	7790 mm	2600 mm	8790 mm	6050 mm
Kobelco	SK140	14,800 Kg	2860 mm	7500 mm	2690 mm	8780 mm	5520 mm
Hyundai	HX145	16,035 Kg	2900 mm	7760 mm	2700 mm	8770 mm	5990 mm
Kobelco	SK210	22,100 Kg	3060 mm	9600 mm	2990 mm	9900 mm	6700 mm
Hyundai	HX220	22,100 Kg	3000 mm	9570 mm	3090 mm	9330 mm	6220 mm
Kobelco	SK230	22,900 Kg	3160 mm	8830 mm	2990 mm	9700 mm	6580 mm
Kobelco	SK270	25,100 Kg	3180 mm	8970 mm	3190 mm	9850 mm	6650 mm



30T – 85T TRACKED EXCAVATORS

MANUFACTURER	MODEL	WEIGHT	HEIGHT	LENGTH	WIDTH	MAXIMUM DIG REACH	MAXIMUM DIG DEPTH
Hyundai	R300	30,380 Kg	3010 mm	10,700 mm	3200 mm	10,020 mm	6440 mm
Kobelco	SK300	30,600 Kg	3270 mm	10,710 mm	3190 mm	10,870 mm	7200 mm
Kobelco	SK350	35,400 Kg	3250 mm	12,000 mm	3340 mm	12,100 mm	7790 mm
Kobelco	SK500	51,300 Kg	3380 mm	12,140 mm	3350 mm	12,007 mm	7810 mm
Kobelco	SK500-ME	51,300 Kg	3380 mm	12,140 mm	3350 mm	12,007 mm	7810 mm
Komatsu	PC700	66,110 Kg	3475 mm	12,040 mm	4250 mm	11,585 mm	6910 mm
Kobelco	SK850	80,900 Kg	3770 mm	14,600 mm	4440 mm	13,480 mm	8300 mm

All our excavators are available with multi-brand GPS, height and slew restriction systems.



LONG REACH EXCAVATORS

MANUFACTURER	MODEL	WEIGHT	HEIGHT	LENGTH	MAXIMUM DIG REACH	MAXIMUM DIG DEPTH
Kobelco	SK210 16m	23,000 Kg	3169 mm	14,569 mm	18,321 mm	14,752 mm
Hyundai	HX220 16m	24,820 Kg	3280 mm	12,030 mm	15,220 mm	11,760 mm
Kobelco	SK260 18m	26,600 Kg	3100 mm	9785 mm	18,321 mm	14,752 mm



14T – 18T WHEELED EXCAVATORS

MANUFACTURER	MODEL	WEIGHT	HEIGHT	LENGTH	WIDTH	MAXIMUM DIG REACH	MAXIMUM DIG DEPTH
Hyundai	HW140W	14,880 Kg	3500 mm	7760 mm	2500 mm	8310 mm	5010 mm
Hyundai	HW160W	17,100 Kg	3450 mm	8400 mm	2500 mm	8860 mm	5650 mm
Hyundai	HW180W	18,360 Kg	3940 mm	8400 mm	2500 mm	9020 mm	5820 mm
Hyundai	HW100	11,790 kg	3011 mm	5687 mm	2450 mm	7820 mm	4245 mm

All our wheeled excavators are available with multi-brand tiltrotators, towable trailers and onboard safety features to aid in lone man working environments.



DEMOLITION EXCAVATORS

MANUFACTURER	MODEL	WEIGHT	HEIGHT	LENGTH	WIDTH	MAXIMUM DIG REACH	MAXIMUM DIG DEPTH
Kobelco	SK140	14,100 Kg	2860 mm	7500 mm	2590 mm	8340 mm	5520 mm
Kobelco	SK210	22,100 Kg	3060 mm	9600 mm	2990 mm	9900 mm	6700 mm
Kobelco	SK300	30,600 Kg	3270 mm	10,710 mm	3190 mm	10,870 mm	7200 mm
Hyundai	R300	30,380 Kg	3010 mm	10,560 mm	3300 mm	10,820 mm	7390 mm

Email us today for further information
hiredesk@plantforce.com

Email us today for further information
hiredesk@plantforce.com

DOZERS



DOZERS 9T – 23T

MANUFACTURER	MODEL	WEIGHT	HEIGHT	WIDTH
Komatsu	D37	9300 Kg	2905 mm	2480 mm
CAT	D3	13,980 Kg	1700 mm	1780 mm
CAT	D4	13,272 kg	1768mm	2330 mm
CAT	D5	17,180 kg	3085mm	2500mm
CAT	D6N	16,757 Kg	3222 mm	1236 mm
CAT	D6T	22,009 Kg	3235 mm	4160 mm
CAT	D6TVPAT	22,240 Kg	3200 mm	3706 mm
Komatsu	D61	19,400 kg	3180 mm	3530 mm
Komatsu	D65	22,100 kg	3160 mm	3670 mm
Komatsu	D71	23,100 kg	3170 mm	2840 mm
CAT	D7	29,776 kg	3430 mm	3920 mm
Komatsu	D85	23,500 Kg	3080 mm	3635 mm

Email us today for further information
hiredesk@plantforce.com

LOADING SHOVELS



LOADING SHOVELS 17T – 25T

MANUFACTURER	MODEL	WEIGHT	HEIGHT	LENGTH	WIDTH	BUCKET CAPACITY
Hyundai	HL960	18,800 Kg	5640 mm	8140 mm	2900 mm	3.4 m ³
Hyundai	HL970	23,500 Kg	5970 mm	8740 mm	3100 mm	4.2 m ³
Hyundai	HL960 Waste Spec	24,300 Kg	6460 mm	9145 mm	3100 mm	4.2 m ³

Email us today for further information
hiredesk@plantforce.com



DUMPERS



ADTS

MANUFACTURER	MODEL	WEIGHT	HEIGHT	LENGTH	WIDTH
Thwaites	1T	1000 Kg	2860 mm	3192 mm	1115 mm
Thwaites	3T	3000 Kg	3092 mm	3935 mm	1650 mm
Thwaites	6T	6000 Kg	3300 mm	4780 mm	2240 mm
Thwaites	9T	9000 Kg	3335 mm	4635 mm	2440 mm
Thwaites	6T Cab	5,010 kg	3145 mm	4815 mm	2280 mm
Thwaites	9T Cab	5,390 kg	3285 mm	4670 mm	2485 mm
Wacker Neuson	1T	1,261 kg	2580 mm	3080 mm	1180 mm
Wacker Neuson	3T	1,987 kg	2969 mm	3904 mm	1730 mm
Wacker Neuson	6T Duel View	4,002 kg	3435 mm	4448 mm	2196 mm
Wacker Neuson	9T Duel View	4,252 kg	3483 mm	4622 mm	2420 mm

Email us today for further information
hiredesk@plantforce.com

MANUFACTURER	MODEL	WEIGHT	HEIGHT	LENGTH	WIDTH
Hydrema	912	7270 Kg	2750 mm	5950 mm	2490 mm
Hydrema	922	15,900 Kg	3490 mm	9130 mm	3240 mm
Bell	B20	16,493 Kg	3619 mm	9271 mm	3102 mm
Bell	B25	18,910 Kg	3454 mm	9271 mm	2550 mm
Bell	B30	19,216 Kg	3426 mm	9953 mm	2940 mm
Terex	TA300	28,000 Kg	3560 mm	9930 mm	2860 mm
Terex	TA400	32,233 Kg	4040 mm	11,197 mm	3487 mm

Email us today for further information
hiredesk@plantforce.com

TELEHANDLERS



TELEHANDLERS 5M – 17M

MANUFACTURER	MODEL	LIFT HEIGHT	OPERATING WEIGHT	LOAD
Dieci	Apollo 25.6	5.78 m	4900 Kg	2500 Kg
JCB	531-70	7 m	7060 Kg	3100 Kg
JCB	540-140	14 m	10,880 Kg	4000 Kg
JCB	540-170	17 m	12,060 Kg	4000 Kg
Manitou	MT733	6.90 m	6620 Kg	3300 Kg
Manitou	MT1440	13.53 m	10,900 Kg	4000 Kg
Manitou	MT1840	17.55 m	12,400 Kg	4000 Kg

All our Telehandlers can be hired with the following optional attachments:

- Buckets
- Lifting Hooks
- Sweepers

Email us today for further information
hiredesk@plantforce.com

ROLLERS



ROLLERS 1T – 15T

MANUFACTURER	MODEL	WEIGHT	DRUM WIDTH	COMPACTION
AMMANN	ARR 1575	1450 Kg	850 mm	36 kN
AMMANN	ARX12	1475 Kg	820 mm	23 kN
AMMANN	ARX26	2460 Kg	1200 mm	47 kN
AMMANN	ARX36	3740 Kg	1300 mm	50 kN
AMMANN	ARX45	4685 Kg	1380 mm	57.6 kN
AMMANN	ASC110	11,495 Kg	1500 mm	206 kN
AMMANN	ASC150	15,210 Kg	1500 mm	237 kN
AMMANN	ARS220	22,000 Kg	2130 mm	375 kN
AMMANN	ARS130	14 840 kg	2130 mm	285 kN
AMMANN	ARS150	14 840 kg	2130 mm	325 kN

Both Rollers are available with smooth drum or sheepfoot

Email us today for further information
hiredesk@plantforce.com

Crushing and Screening



SCREENERS

Range Overview



HEAVY DUTY GRIDS

Our heavy duty mobile grids are versatile and compact machines that can be used for primary screening and recycling applications on restricted work sites where space is at a premium.

Designed and constructed to the highest specification, they can withstand the toughest of applications from waste reclamation projects to quarry face and demolition environments, with features including heavy duty twin deck vibrating grids, wander lead operated and tracked undercarriages.



INCLINED SCREENERS

Our range of tracked inclined screens are versatile, high capacity, robust and durable machines that can be operated in a wide range of primary and secondary screening applications.

The 6 Series range incorporates three-way and four-way split screeners that are equally suitable for processing and sizing aggregates, minerals and recycling applications.



HEAVY DUTY SCREENERS

We offer arguably the largest range of mobile screening equipment for hire from leading global manufacturers.

Large or small, inclined, horizontal, 2 or 3 decks or 2, 3 or 4 way splits, we can offer screens to suit many industries and applications.

HEAVY DUTY GRID 595

WHAT WE DO



SCREENING



CRUSHING



CONVEYING



NATIONWIDE SUPPORT

What we do

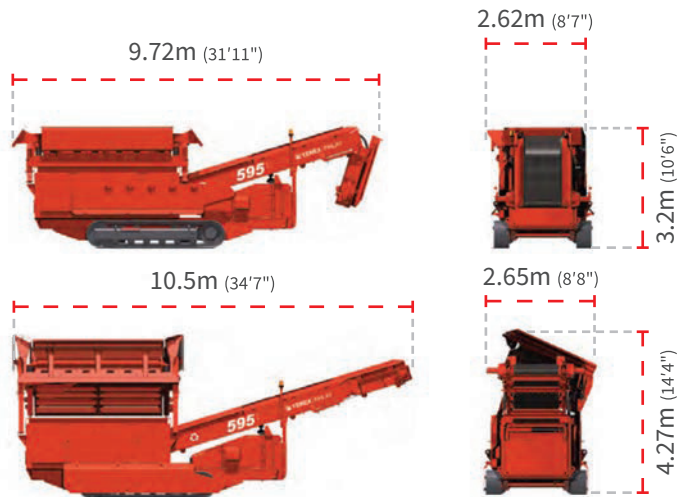
Plantforce Crushing and Screening offers a range of crushing, screening and conveying solutions to help to increase production during peak periods.

From a fleet of the latest crushers, screeners and conveyors for the industry leading product range, Plantforce Crushing and Screening customers benefit from the vast knowledge and expertise of the Plantforce Crushing and Screening team to ensure you receive the highest levels of service in the industry.

We believe in listening to our customers and, when required, visiting your site to ensure we offer the right machine for your job. By taking this approach our aim is to become a trusted supplier of your business that you can rely on to provide a solution that works in a timely manner with an efficient and personable service. With our team of nearly 50 fully trained and equipped field service engineers, we offer reassurance that wherever you are in Great Britain, we are on hand to keep your operation running.



Transport & Working



Grid Size	4500 x 2755 mm
Operating Weight	19,080 Kg
Engine	Caterpillar C3.4 73.8Hp

Unique Machine Features:

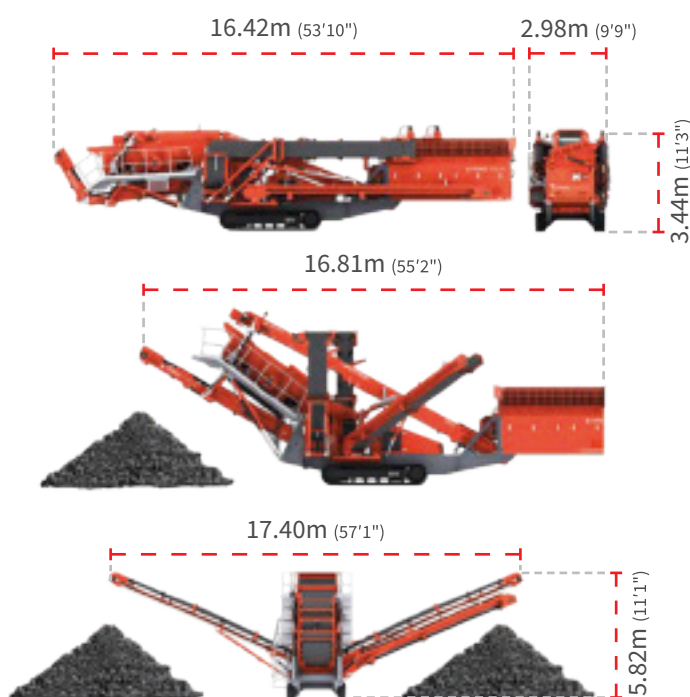
- Heavy duty aggressive scalping and screening double deck grid.
- Robust T-Bar cassette top deck and meshed bottom deck configuration for accurate screening of product material.
- Hydraulic folding main conveyor and grid raise allow for rapid set up and tear down times.

Email us today for further information
crushingandscreening@plantforce.com



INCLINED SCREENER 674

Transport & Working



No. Stockpillers	3
Operating Weight	33,500Kg
Ave. Fuel Consumption	12.9 l/hr
Ave. Throughput	300 mtph

Unique Machine Features:

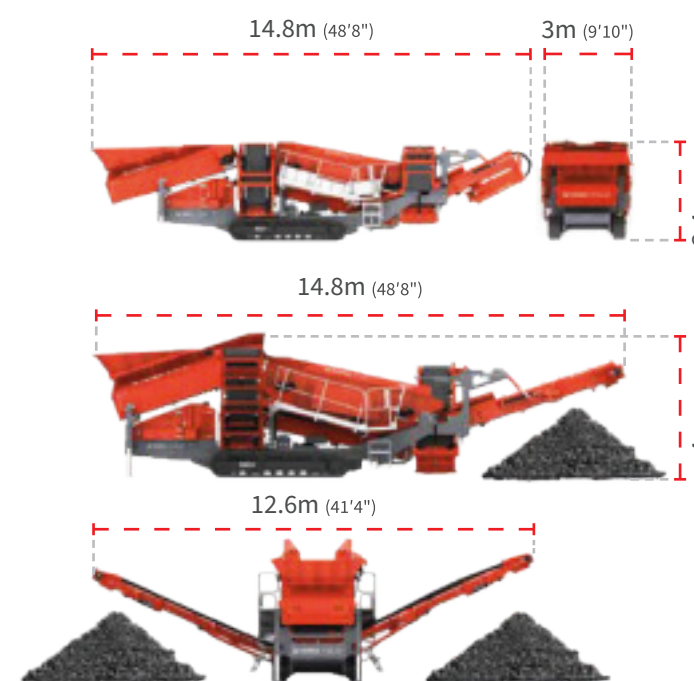
- L' style folding side conveyors which have allowed for the simplified folding of the 4th product conveyor.
- No transfer conveyor for oversized material from top deck, fed onto conveyor via a lined chute.
- Also included are fixed catwalks again to keep site set-up and tear down times to a minimum.
- Quick and easy to set up.

Email us today for further information
crushingandscreening@plantforce.com



HEAVY DUTY SCREENER 883+

Transport & Working



*Showing telescopic side conveyor option

No. Stockpillers	3
Operating Weight	31,000Kg
Ave. Fuel Consumption	11.34 l/hr
Ave. Throughput	700 mtph

Unique Machine Features:

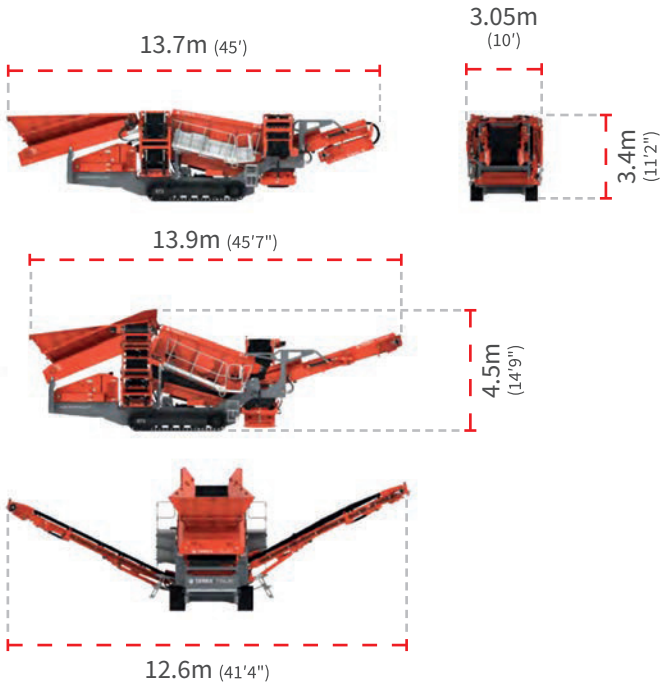
- Nearly blockage-free screening in the upper and lower deck.
- Flexibility to work in difficult waste processing, slag, biomass, compost, etc.

Email us today for further information
crushingandscreening@plantforce.com



HEAVY DUTY SCREENER 873+

Transport & Working



No. Stockpillers	3
Operating Weight	26,300 Kg

Unique Machine Features:

- Screen box angle can be hydraulically adjusted to an angle between 13° to 19°.
- Screen box discharge end raises hydraulically 500mm to facilitate mesh changing.
- Screen box can accept punch plate, cascade fingers, bofar bars and speedharps.
- Oversize conveyor angle can be adjusted from 18° to 24°.
- 1.2m wide Belt feeder complete with 7m3 manual folding hopper.

Email us today for further information
crushingandscreening@plantforce.com



Range Overview



JAW CRUSHERS



IMPACT CRUSHERS

Our tracked mobile jaw crushers are renowned for their capabilities in the reduction and sizing of aggregates for construction materials and also recycling construction waste.

Our range of jaw crushers are designed to meet the toughest demands of primary crushing applications with their impressive power, reliability and proven performance.

The tracked mobile impact crushers we have available are renowned for their versatility and capabilities in the reduction and sizing of soft to medium natural granite and limestone and non-abrasive materials as well as recycling construction demolition waste.

Our range of impact crushers are ideal for producing a quality end product where grain shape, distribution and consistency is paramount.

JAW CRUSHER J-960



Jaw Size	900 x 600 mm
Operating Weight	29,250Kg
Ave. Fuel Consumption	12.36 l/hr
Ave. Throughput	135 mtph

Unique Machine Features:

- Quick and easy to set up.
- Improved clearances and easier service and maintenance access.
- Direct Drive for Fuel Efficiency.
- Easy to transport.

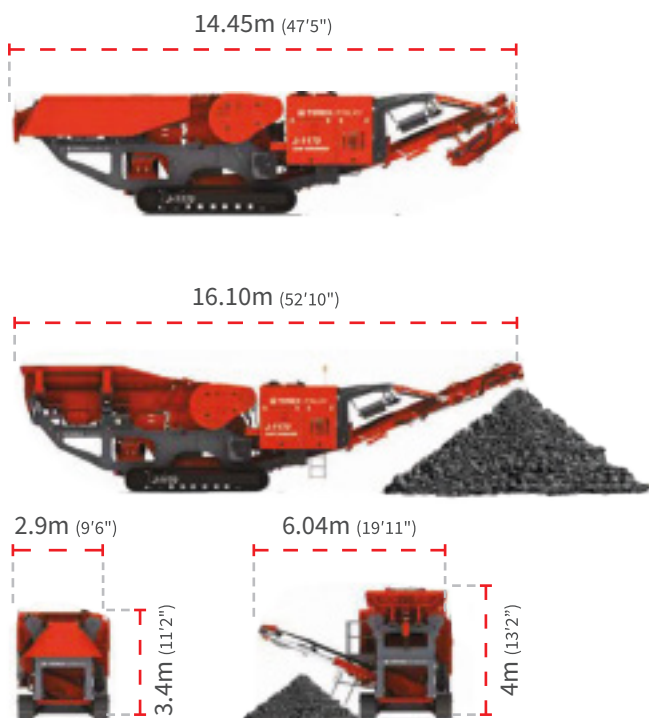


Email us today for further information
crushingandscreening@plantforce.com



JAW CRUSHER J-1170HR

Transport & Working



Jaw Size	1100 x 700 mm
Operating Weight	48,900 Kg
Ave. Fuel Consumption	17.72 l/hr
Ave. Throughput	300 mtp

Unique Machine Features:

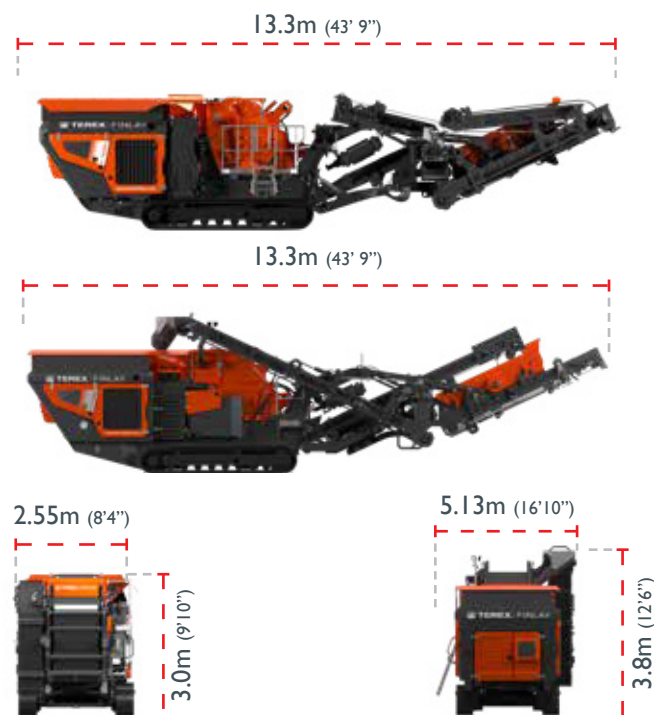
- Primary designed for max fuel efficiency via Hydrostatic Drive and Load Sensing Hydraulics, minimum of 13% savings.
- Improvements made for recycling by greater clearances and design.
- Hydraulic Chamber Unblock.
- Central and Low Level Hydraulic Valves for ease of maintenance.

Email us today for further information
crushingandscreening@plantforce.com



IMPACT CRUSHER IC-100RS

Transport & Working



Rotor Size	Ø1033 x 1100 mm
Operating Weight	37,000Kg
Ave. Fuel Consumption	22.43 l/hr
Ave. Throughput	380 mtp

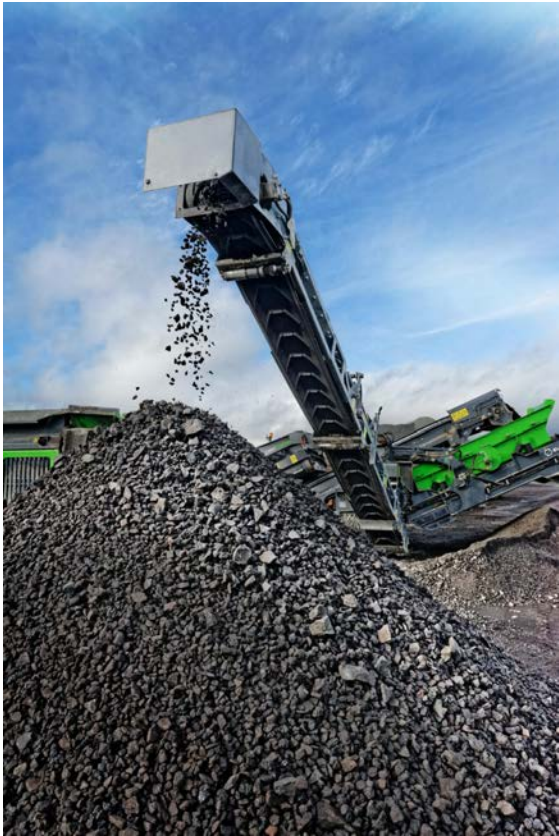
Unique Machine Features:

- High Productivity and Good reduction ratios.
- Direct drive along with minimum engine speeds for maximum efficiency.
- Larger grizzly area for improved removal of fines.
- New designed Terex chamber incorporating hinging inlet lid, full hydraulic aprons with optional 2nd apron auto adjust.

Email us today for further information
crushingandscreening@plantforce.com



EVOQUIP COBRA 230R



Diameter Rotor	830mm x 860mm
Operating Weight	29,300 Kgs
Output Potential	250 tph

Unique Machine Features:

- Compact Design: The Cobra 230R is built with a compact design, making it easy to transport and maneuver in tight spaces.
- Versatile Crushing
- The Cobra 230R features an independent pre-screen that removes the fines before they reach the crushing chamber.
- The machine can be equipped with an optional recirculation system, allowing the operator to produce a high-quality finished product with a single pass.

Email us today for further information
crushingandscreening@plantforce.com



CONVEYORS

Range Overview

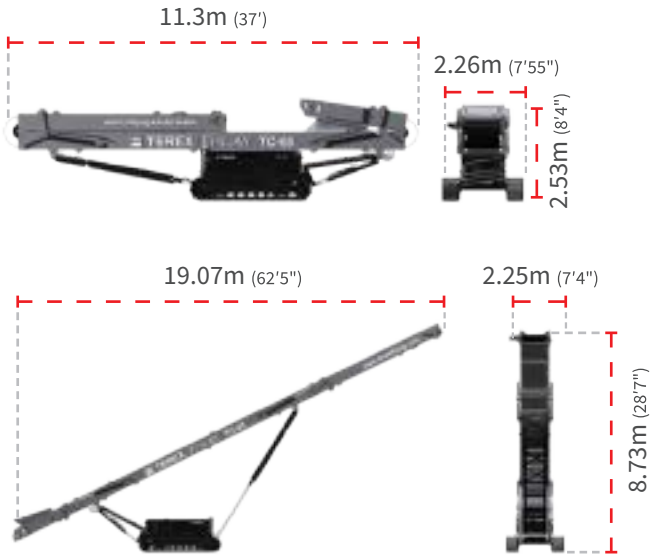


Our tracked mobile conveyor range currently consists of two self-powered tracked options, 65ft and 80ft.

Transport costs of each conveyor are kept to a minimum, due to the compact transport design. A simple yet robust design allows for easy setup and positioning to fit the customers' requirements.

CONVEYOR TC-65

Transport & Working



Conveyor Length	65'7"
Belt Width	42"
Operating Weight	11,300Kg
Ave. Fuel Consumption	6.2 l/hr
Ave. Throughput	400 mtp

Unique Machine Features:

- For accepting constant flow loads.
- Wide 1050mm/42" belt.
- Max discharge heights 10m/32'10".
- Stockpile capacity 1844m³/2412yd³.

Email us today for further information
crushingandscreening@plantforce.com

Compact

MINI & MIDI EXCAVATORS

Range Overview



MICRO



MINI



MIDI

Mini excavators are particularly important to the line-up. Although used frequently for landscaping and utilities, they also have an important job to do as support on larger construction and demolition projects. Our extensive mini excavator range comprises of 10 models, ranging from the smallest micro-excavator through to the midi-class machines.

WHAT WE DO



EXCAVATORS



DUMPERS



TELEHANDLERS



ROLLERS



TRACKED BARROWS

What we do

Plantforce Compact is a dedicated division of light equipment. Just ask our experts where you will find everything for your needs.

May 2019 saw the opening of a highly anticipated brand-new division of the business, Plantforce Compact Range, with a new state-of-the-art depot based in Bristol backed by a massive £2.8 million investment into new highly specked compact machinery ranging from 0.3 ton to 3t cabbed excavators, telehandlers, trench compactors, hi tip dumpers and an industry specific small tools range.

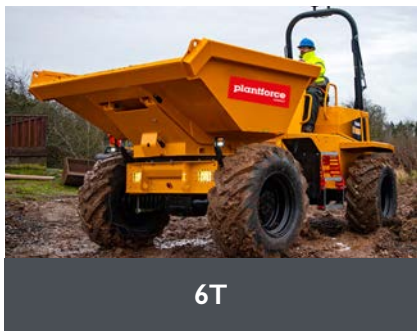


1T – 8T TRACKED EXCAVATORS

MANUFACTURER	MODEL	WEIGHT	HEIGHT	LENGTH	WIDTH	MAXIMUM DIG REACH	MAXIMUM DIG DEPTH
Kobelco	SK08	1035 Kg	2200 mm	2625 mm	840 mm	2830 mm	1460 mm
Kobelco	SK10	1145 Kg	2250 mm	3040 mm	1000 mm	3350 mm	2150 mm
Kobelco	SK17	1555 Kg	2350 mm	3490 mm	1320 mm	3890 mm	2150 mm
Kobelco	SK25	2780 Kg	2530 mm	4110 mm	1500 mm	4520 mm	2540 mm
Kobelco	SK28	2950 Kg	2510 mm	4510 mm	1550 mm	4840 mm	2590 mm
Kobelco	SK30	3340 Kg	2570 mm	4470 mm	1550 mm	4930 mm	2810 mm
Kobelco	SK55	5160 Kg	2530 mm	5500 mm	1960 mm	6270 mm	3900 mm
Kobelco	SK75 Knuckle Boom	7760 Kg	2600 mm	5560 mm	2300 mm	6750 mm	4600 mm
Kobelco	SK75	7760 Kg	2600 mm	6360 mm	2300 mm	6880 mm	4580 mm
Kobelco	SK85	8270 Kg	2550 mm	6740 mm	2300 mm	7240 mm	4200 mm

COMPACT DUMPERS

Range Overview



We have the best-quality dumpers on the market.

Advanced design and investment in tooling provide today's customers with the very best products at the cutting edge of technology. This means more than just the strength and reliability you need, it means an increased focus on customer satisfaction, safety and ergonomics across the range.

1T DUMPER



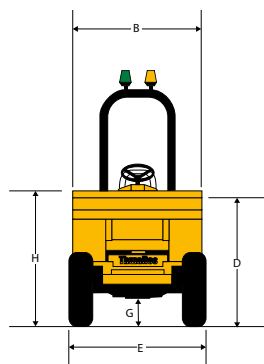
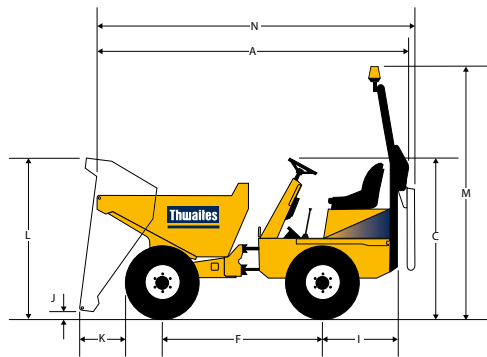
WEIGHT	1000 Kg
(P) HEIGHT	2860 mm
(R) LENGTH	3192 mm
(E) WIDTH	1115 mm

Unique Machine Features:

- Easily transported by trailer.
- Ideal machine when working in confined spaces or with limited access.
- Easy to operate.
- Safe, compliant and competitive.

Email us today for further information
compact@plantforce.com

Dimensions



	(mm)
A	3785
B	1650
C	1981
D	1381
E	1650
F	1950
G	337
H	1524
I	1042
J	321
K	603
L	2131
M	3108
N	3950

Unique Machine Features:

- Easily transported by trailer.
- Ideal machine when working in confined spaces or with limited access.
- Easy to operate.
- Safe, compliant and competitive.

Email us today for further information
compact@plantforce.com



3T DUMPER

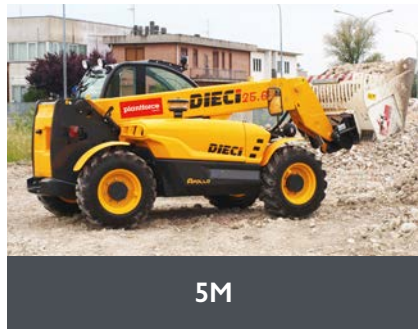
WEIGHT	3000 Kg
(M) HEIGHT	3108 mm
(N) LENGTH	3950 mm
(E) WIDTH	1650 mm



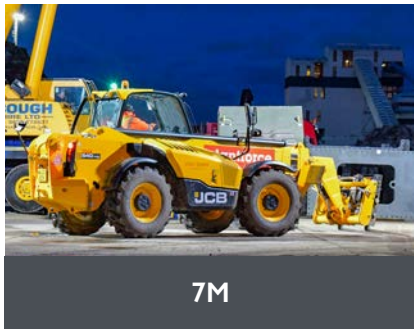


COMPACT TELEHANDLERS

Range Overview



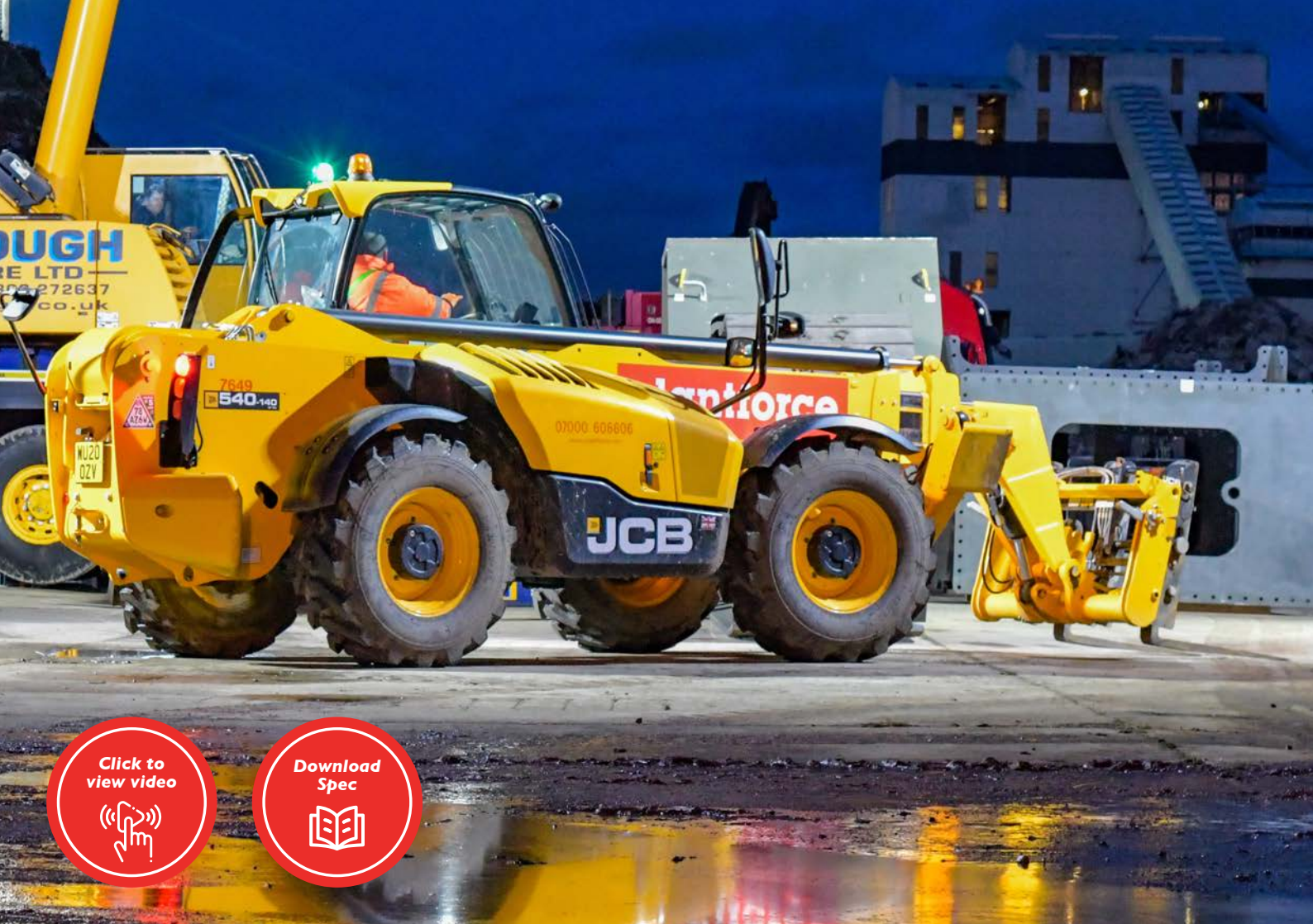
5M



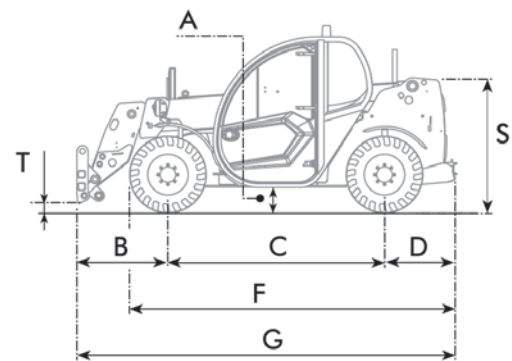
7M

All our Telehandlers can be hired with buckets, lifting hooks and sweepers.

The telehandler can be defined as fixed or rotary depending on whether or not it is equipped with a rotating turret.



Dimensions



5M TELEHANDLERS

OPERATING WEIGHT	4900 Kg
LIFT HEIGHT	5.78 m
LOAD	2600 Kg
(H) OVERALL HEIGHT	1.95 m
(M) OVERALL WIDTH	1.85 m
(G) OVERALL LENGTH	4.12 m

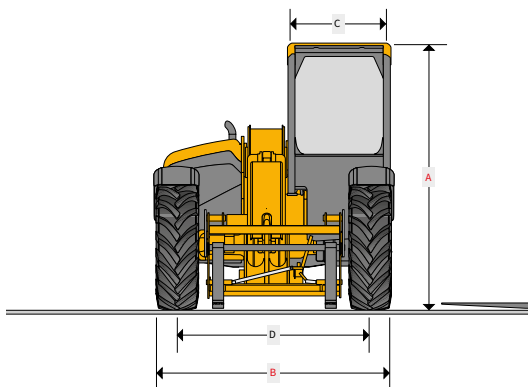
Unique Machine Features:

- Unrivalled manoeuvrability, unparalleled build quality and all-day operator comfort all come as standard.
- Ideal for narrow spaces.
- Unrivalled productivity, efficiency, safety and serviceability.

Email us today for further information
compact@plantforce.com

Dimensions

7M TELEHANDLERS



OPERATING WEIGHT	7060 Kg
LIFT HEIGHT	7 m
LOAD	3100 Kg
(A) OVERALL HEIGHT	2.49 m
(B) OVERALL WIDTH	2.23 m
(G) OVERALL LENGTH	4.99 m

Unique Machine Features:

- Unrivalled manoeuvrability, unparalleled build quality and all-day operator comfort all come as standard.
- Ideal for narrow spaces.
- Unrivalled productivity, efficiency, safety and serviceability.

Email us today for further information
compact@plantforce.com

COMPACT ROLLERS

PEDESTRIAN ROLLER

Range Overview



Our Rollers provide perfect ground contact and optimal compaction.

The machine and its padfoot drum provide results, even where other compactors have failed. Its ability to work in cohesive soils can prevent the need for soil removal and replacement, providing a significant financial impact.

TRENCH ROLLER



WEIGHT	1450 Kg
DRUM WIDTH	850 mm
COMPACTION	36 kN
OPERATING SPEED	2400 l/min

Unique Machine Features:

- Articulated trench roller
- Provides perfect ground contact and optimal compaction.
- The machine and its padfoot drum provide results, even where other compactors have failed.
- Two steering cylinders help make the ARR 1575 responsive and precise, while the oscillation feature provides excellent stability on uneven surface of a ditch.

Email us today for further information
compact@plantforce.com



Unique Machine Features:

- Hold to run handle
- Fully hydrostatic system
- Smooth single drum
- Hydraulic hand brake
- Ergonomically designed, simple-to-use controls
- Nationwide delivery and/or collection available

Email us today for further information
compact@plantforce.com

TWIN DRUM ROLLER



MANUFACTURER	MODEL	WEIGHT	DRUM WIDTH	COMPACTION
AMMANN	ARX12	1475 Kg	820 mm	23 kN
AMMANN	ARX26	2460 Kg	1200 mm	47 kN
AMMANN	ARX36	3740 Kg	1300 mm	50 kN

Email us today for further information
compact@plantforce.com



Range Overview



All our Tracked Barrows are specifically built as tracked carriers, therefore giving them many advantages over competing machines. Making these models very popular throughout the UK and Ireland in hire fleets and on all manner of jobsites.

500KG TRACKED BARROWS



WEIGHT	500 Kg
(A) LENGTH	1760 mm
(C) WIDTH	716 mm
TIP HEIGHT	1430 mm
CAPACITY	500 Kg

- Unique Machine Features:**
- Available in the Hi tip model, self loading or simply with tipper body.
 - Body rounded at the corners
 - Oscillating rollers allowing it to cross the most difficult to access land with minimal effort, significantly reducing bumps.

Click to view video

Download Spec

Email us today for further information
compact@plantforce.com



Click to view video

Download Spec

600KG TRACKED BARROWS

WEIGHT	600 Kg
(A) LENGTH	1680 mm
(E) WIDTH	695 mm
TIP HEIGHT	1675 mm
CAPACITY	600 Kg

- Unique Machine Features:**
- Available in the Hi tip model, self loading or simply with tipper body.
 - Easy to use.
 - Long lasting undercarriage, reduce need for maintenance, incredible power and reduced fuel consumption make the C60 an incredible unit.

800KG TRACKED BARROWS



WEIGHT	800 Kg
(A) LENGTH	1926 mm
(D) WIDTH	810 mm
TIP HEIGHT	1500 mm
CAPACITY	800 Kg

- Unique Machine Features:**
- Available in the Hi tip model, self loading or simply with tipper body.
 - Easy to use.
 - Long lasting undercarriage, reduce need for maintenance, incredible power and reduced fuel consumption make the C60 an incredible unit.

Click to view video

Download Spec

Email us today for further information
compact@plantforce.com



FUEL CUBE

TRANSCUBE 2000L STATIC



The Transcube 2000L Static fuel cube is a large, stationary fuel storage tank designed for safe and efficient fuel storage on job sites, remote locations, and other industrial settings.

With a capacity of 2000 liters, it provides a significant amount of fuel storage without the need for multiple smaller tanks.

MODEL	Model	Weight (Empty)	Capacity
Electric Pump	20TCG	823 kg	2091 Litres
Hand Pump	20TCG	823 kg	2091 Litres



PRESSURE WATER BOWSER

BBW35KPE+ES



he Brendon BBW35KPE, BBW35KPE+ES & BBW30KLN+ES Bowserwashers are designed and built for the toughest of cleaning in remote and difficult to access locations and used in many industrial applications.

With a tank capacity of 940 litres giving an approximate cleaning time of 1 ½ hours on a full tank, our Pressure Washer Trailer will complete most of your cleaning requirements.

Weight	Max pressure BAR - (PSI)	Water Tank
500kg	240 BAR / 3500 PSI	940 litre water tank



HYDRAULIC POWER PACK

JCB HYDRAULIC POWERPACKS



JCB hydraulic powerpacks are compact and portable units that provide a reliable source of hydraulic power for various applications.

These powerpacks are designed to be durable, easy to operate, and highly efficient, allowing for consistent performance in the most demanding environments.

Model	Weight	Max pressure BAR - (PSI)
BEAVER	66 kg	138 (2000)

Attachments



BREAKERS

0.8T – 50T BREAKERS

DAEMO Size Range – 0.8t – 50t

MODEL	OPERATING WEIGHT	OVERALL LENGTH	WORKING PRESSURE	SUITABLE EXCAVATOR
B06	68 Kg	932 mm	6~12 MPa	0.8~1.2 ton
B30	190 Kg	1352 mm	8~12 MPa	1.2~4 ton
B50	333 Kg	1603 mm	10~14 MPa	3~8 ton
B70	431 Kg	1805 mm	10~14 MPa	5~8 ton
B140	929 Kg	2225 mm	12~16 MPa	10~15 ton
B210	1738 Kg	2764 mm	13~17 MPa	18~25 ton
B360	2937 Kg	3200 mm	14~18 MPa	28~36 ton
B450	3713 Kg	3595 mm	14~18 MPa	40~50 ton
B650	4380 Kg	3766 mm	14~18 MPa	42~81 ton



Our Daemo breakers all come with an anti-blank firing system

- Products are ranging in size from 0.8t to 50t. Auto grease systems are available on selected breakers which allows you to work without having to stop and grease it several times a day, also from 7t and above they come with a 2 stroke selection system which can drop fuel consumption and improve performance.



1T – 80T BREAKERS

NPK Size Range – 1t – 80t

MODEL	OPERATING WEIGHT	OVERALL LENGTH	WORKING PRESSURE	SUITABLE EXCAVATOR
PH-06	94 Kg	991 mm	20 ~ MPa	1~2 ton
PH-07	112 Kg	1035 mm	21 ~ MPa	1.5~3 ton
PH-1	162 Kg	1154 mm	21 ~ MPa	2~3.5 ton
PH-2	200 Kg	1240 mm	21 ~ MPa	3~5.5 ton
PH-3	314 Kg	1395 mm	21 ~ MPa	4~9 ton
PH-4	465 Kg	1570 mm	21 ~ MPa	6~12 ton
GH-6	851 Kg	1931 mm	21 ~ MPa	12~18 ton
GH-9	1482 Kg	2356 mm	21 ~ MPa	17~24 ton
GH-15	2618 Kg	2933 mm	21 ~ MPa	28~45 ton
GH-18	3067 Kg	3056 mm	21 ~ MPa	38~50 ton



A better design that combines efficiency, reliability and serviceability

- Standard on all medium and large NPK hydraulic hammers, our shock-absorbing mounting bracket uses special heavy-duty rubber mounts to absorb shock, recoil and impulse vibration.
- The unique one-piece design eliminates the need for mechanical springs and overly heavy mounting brackets. The net result is minimization of machine wear and improved operator comfort for greater reliability and productivity.



Email us today for further information
attachments@plantforce.com

WHAT WE DO



BREAKERS



SELECTOR GRABS



COMPACTOR PLATES



FIXED GRAPPLES



PALLET FORKS



BUCKETS



PILING HAMMERS



RIPPER TEETH



PULVERISERS



MULTI PROCESSORS



AUGERS



ROCK WHEELS

What we do

Now with a massive 360 items in the fleet, Plantforce has now rose to be the largest attachments focused company in the country. Plantforce Attachments can offer hydraulic breakers, grabs, grapples, shears, munchers, crusher buckets, riddle buckets, ripper teeth, pallet forks and much more. With over 23 years of expertise in the plant hire industry Plantforce is a company that is well known and appreciated for it's wide and safe range of specialist industry attachments department.



SELECTOR GRABS

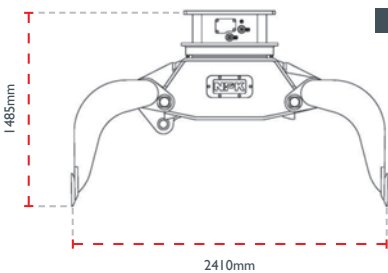


NPK

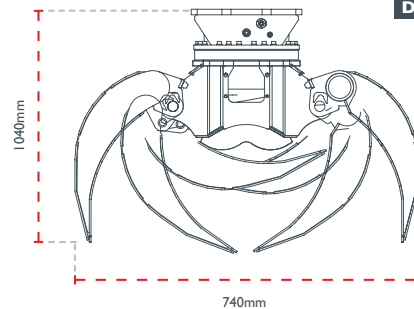
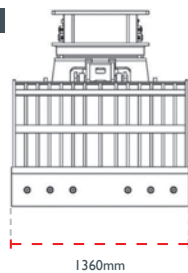
MODEL	OPERATING WEIGHT	CAPACITY	JAW OPENING	SUITABLE EXCAVATOR
DG-9	450 Kg	180 L	1632 mm	5~9 ton
DG-16	875 Kg	425 L	1850 mm	10~16 ton
DG-20	1230 Kg	500 L	2050 mm	14~20 ton
DG-30	1850 Kg	800 L	2410 mm	18~30 ton
DG-40	2050 Kg	900 L	2410 mm	25~40 ton

KINSHOFER

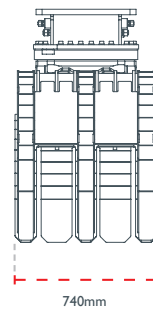
MODEL	OPERATING WEIGHT	CAPACITY	JAW OPENING	SUITABLE EXCAVATOR
DI5H-T	1100-1500 Kg	3000 KG	740 mm	11~15 ton



DG-40



DI5H-T



SELECTOR GRABS

NPK KINSHOFER

Selector grabs are commonly used in construction and industrial sites for various purposes. These versatile machines come with a wide range of attachments that allow them to tackle different tasks efficiently.

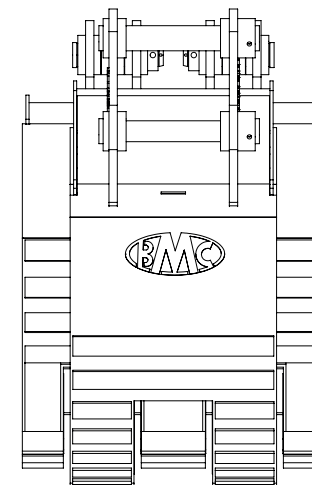
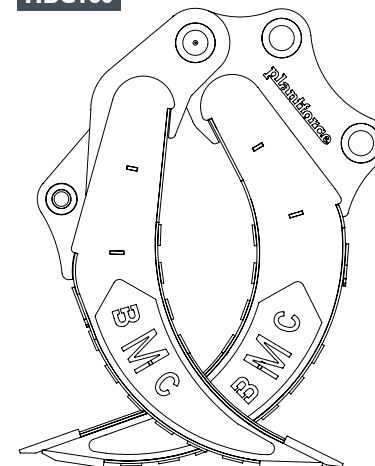
FIXED GRAPPLES



BMC / GEITH Size Range 20t – 50t

MODEL	OPERATING WEIGHT	FULL OPEN	SUITABLE EXCAVATOR
HDG110	1225 Kg	2413 mm	18~22 ton
HDG160	2645 Kg	3607 mm	40~52 ton

HDG160



FIXED GRAPPLES



Made with abrasion resistant, high-tensile strength steel for durability, boxed tines for increased strength, maximizes production while minimizing downtime

- Replaceable bearings in main hinges with O-rings to protect the pins by keeping grease in and dirt out for a longer life span. Available with optional wear package, ideal for demolition, scrap handling, land clearing, and refuse handling.

Email us today for further information
attachments@plantforce.com

COMPACTOR PLATES

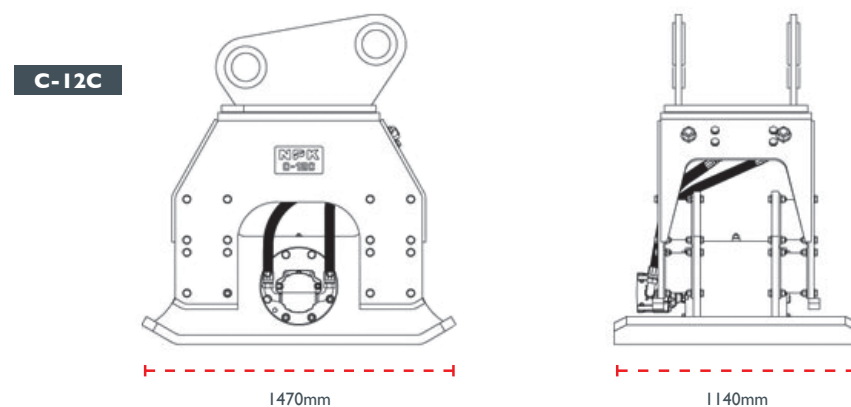


PALLET FORKS



NPK Size Range – 2.5t – 63t

MODEL	OPERATING WEIGHT	IMPULSE FORCE	LENGTH x WIDTH	SUITABLE EXCAVATOR
C-2D	172 Kg	1600 Kg	635 x 320 mm	2.5~5.5 ton
C-4C	436 Kg	3600 Kg	860 x 580 mm	4.5~11.5 ton
C-6C	778 Kg	7300 Kg	1020 x 740 mm	7~20 ton
C-8C	1056 Kg	11,000 Kg	1170 x 860 mm	14~34 ton
C-12C	2030 Kg	20,400 Kg	1470 x 1140 mm	35~63.5 ton



COMPACTOR PLATES

NPK®

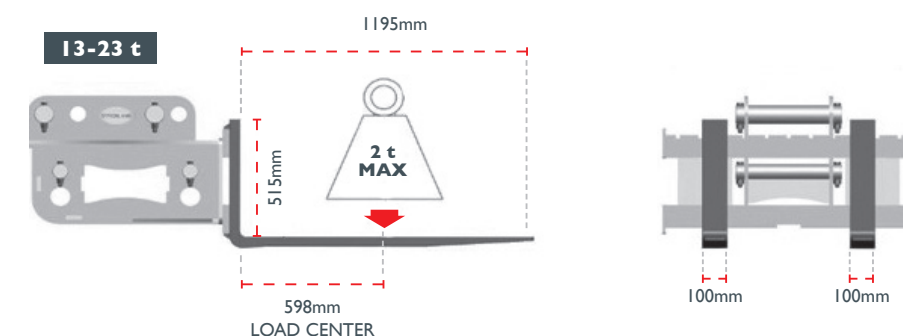
The NPK range of compactor plates are designed and built to meet today's demands for greater on-site productivity, expanding and enhancing the versatility of your excavator

- NPK's versatile Construction Compactor can work productively virtually anywhere your excavator can reach. In trenches, over and around pipe, to the top of piling and sheeting. Next to foundations and around obstructions. Even on steep slopes or rough terrain where conventional rollers and other machines either can't work or would be hazardous to try.

Email us today for further information
attachments@plantforce.com

STRICKLAND Size Range 5t – 23t

MODEL	OPERATING WEIGHT	DEPTH	WIDTH	SUITABLE FORK LIFT
5-8t	253 Kg	1195 mm	1000 mm	5~8 ton
13-23t	362 Kg	1195 mm	1000 mm	13~23 ton



The Strickland range of fork attachments are designed and manufactured in the UK to CE specifications

- All our pallet forks come with adjustable pins for use with various hitches, we also offer a wide range of fork extensions, please get in contact for more information.

Email us today for further information
attachments@plantforce.com

SCREENING BUCKETS



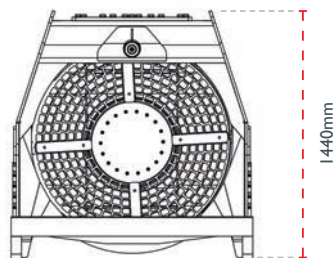
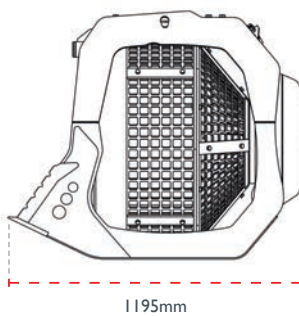
RIDDLE BUCKETS



MB Size Range 14t – 20t

MODEL	OPERATING WEIGHT	LOAD CAPACITY	DIMENSIONS	EXCAVATOR
MB-S14 S4	1.1 t	1.10 m ³	1195 x 1440 mm	14~20 ton

MB-S14



SCREENING BUCKETS



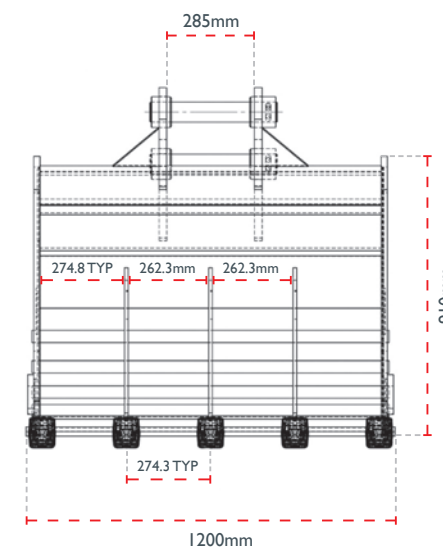
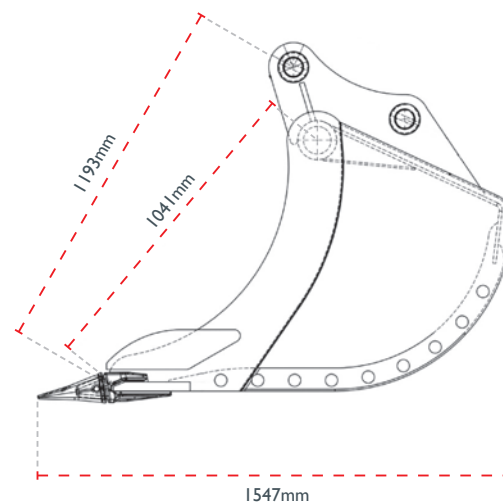
Perfect for on-site cleaning and screening of inert materials

- The MB screening bucket is a piece of equipment that works by taking advantage of the hydraulic system of the excavators to which it is fitted.
- It has many areas of applications: from building demolitions in general, to the requalification of former industrial and urban areas to the processing of excavation materials, from the earth movement sector to road works, from quarries to mines, from environmental reclamation to applications on rocky soil.

Email us today for further information
attachments@plantforce.com

RIDDLE BUCKETS

Size Range 5t – 45t



RIDDLE BUCKETS



Well suited to rocky soils, our riddle buckets are manufactured to work with machines from 5 tonne to 45 tonne, with various sizes from 24 to 72 inches

- We have numerous buckets in stock with different specs, please contact us for more information.

Email us today for further information
attachments@plantforce.com

TILT BUCKETS

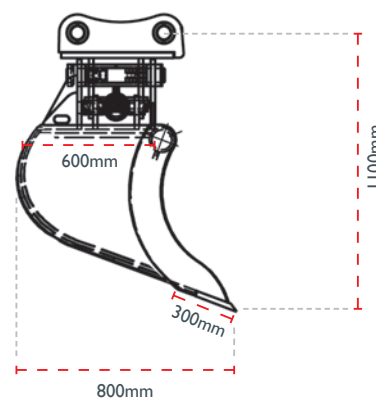
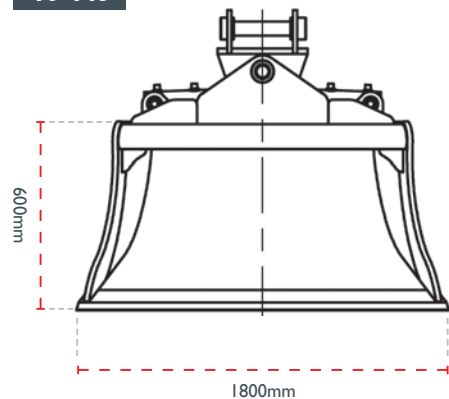


TILT BUCKETS

STRICKLAND Size Range 5t – 22t

MODEL	BUCKET WIDTH	SUITABLE EXCAVATOR
5-8t	1520 mm	5~8 ton
10-14t	1800 mm	10~14 ton
20-22t	1850 mm	20~22 ton

10-14t



The Strickland heavy duty hydraulic tilt buckets have been designed and manufactured in the UK and are all CE marked to ensure they will perform in the very toughest of operating environments

- This heavy duty hydraulic tilt bucket operate with one hydraulic piston. Our hydraulic tilt buckets are hugely popular, available for all makes and models of excavators.

Email us today for further information
attachments@plantforce.com

CRUSHING BUCKETS



CRUSHING BUCKETS

MB Size Range 14t – 30t

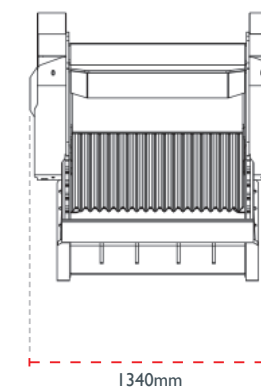
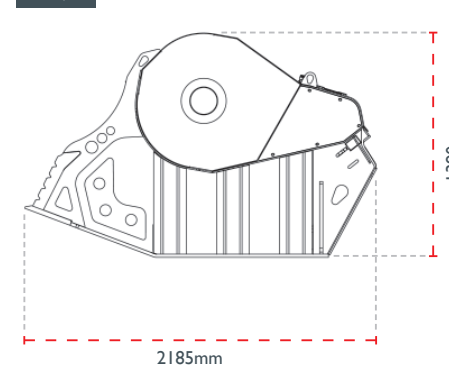
MODEL	OPERATING WEIGHT	LOAD CAPACITY	WORKING PRESSURE	EXCAVATOR
BF60	1.8 ton	0.55 m ³	215 bar	14 ton
BF90	3.6 ton	0.90 m ³	220 bar	20~30 ton



Perfect for on-site crushing of inert materials, the MB Crusher Bucket takes advantage of the hydraulic system of the excavators

- The range is suitable for 14 - 30 ton machines.
- It has many areas of applications: from building demolitions in general, to the reclamation of former industrial and urban areas to the processing of excavation materials, from the earth movement sector to road works, from quarries to mines, from environmental reclamation to applications on rocky soil.

BF90



Email us today for further information
attachments@plantforce.com

ROCK WHEELS

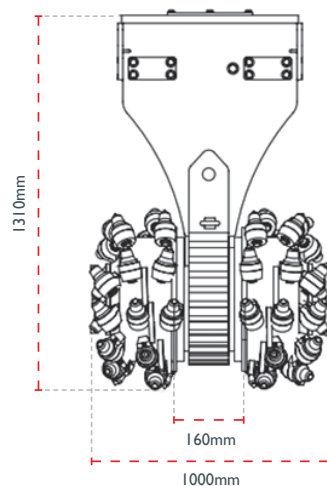
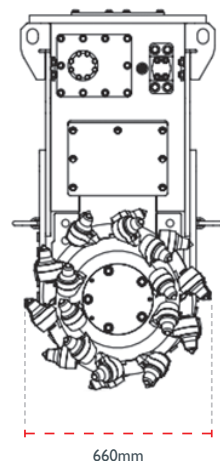


ROCK WHEELS

SIMEX Size Range 6t – 30t

MODEL	OPERATING WEIGHT	DRUM WIDTH	WORKING PRESSURE	EXCAVATOR
TF400	476 Kg	635 mm	5100 psi	6~12 ton
TF600	635 Kg	711 mm	5100 psi	9~16 ton
TF850	1134 Kg	812 mm	5100 psi	14~20 ton
TF1100	1451 Kg	864 mm	5100 psi	20~34 ton

TF1100



SIMEX
your business, our passion

When your application requires small fixed-section trenching i.e. for the laying of utilities up to a maximum depth of 800mm and width of 30-250mm asphalt, concrete and rock Simex T wheel excavators are your solution

- With high level of visibility, wheel protection at all depths and hydraulic piston motors with direct wheel drive provide you with safety and high performance for the works requiring cutting small sections of trenches on hard or compacted surfaces.

Email us today for further information
attachments@plantforce.com

PILING HAMMERS

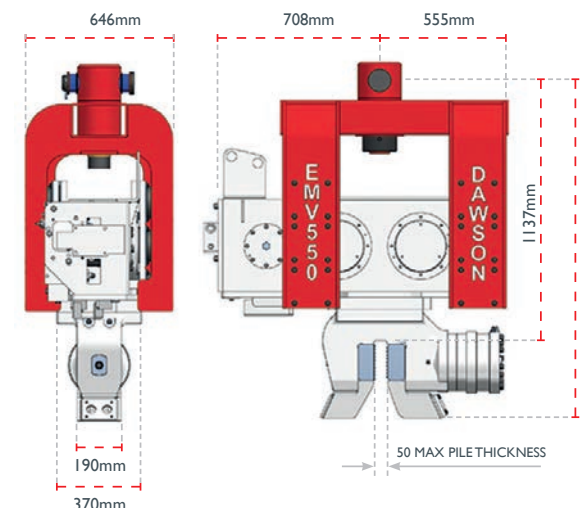


PILING HAMMERS

DAWSON Size Range 7t – 55t

MODEL	MAX HYDRAULIC FLOW	TOTAL MASS	CLAMP FORCE	SUITABLE EXCAVATOR
EMV220	250 L/min	580 Kg	26.5 t	7~22 ton
EMV300	250 L/min	965 Kg	36 t	12~35 ton
EMV550	400 L/min	1500 Kg	66 t	30~55 ton

EMV550



dcp
DAWSON
CONSTRUCTION PLANT LTD

Dawson excavator mounted vibrators have been designed specifically to work in place of an excavator bucket to drive and extract piles

- The pile can be lifted to vertical using the built-in lifting chain where it is then gripped tightly in a powerful hydraulic jaw. Once secured, the pile is then vibrated with high frequency vibrations so as to 'fluidise' the soil resisting the pile.
- Down-crowd force applied by the excavator boom, coupled with the self-weight of the pile and the vibrator, provides sufficient force to push the pile into the ground. Naturally, the process works in reverse for pile extraction. The equipment offers a highly productive and cost effective piling rig based around a standard, readily available excavator.

Email us today for further information
attachments@plantforce.com

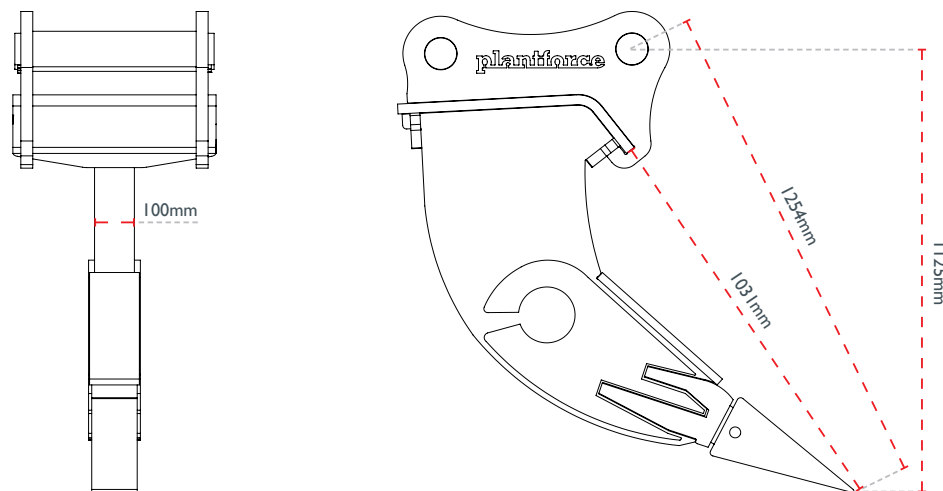
RIPPER TEETH



RIPPER TEETH

SIZE RANGE 8t – 45t

Here at Plantforce Attachments we are always adding to our stock so please feel free to call us and see what's the latest we have available.



Email us today for further information
attachments@plantforce.com

RIPPER TEETH



These are designed and manufactured to help reduce wear on both your machine and buckets

- The sloping and penetrative design 'rips' up hard soil and rock with ease, making digging easier. This helps reduce stress on buckets and machines, making the process more economical (as less stress on parts of the excavator and buckets inevitably means less down time).
- Rippers are available for all machines from 8 tonne to 45 tonne and can be manufactured with a variety of wear parts added to suit your application.

PULVERISERS



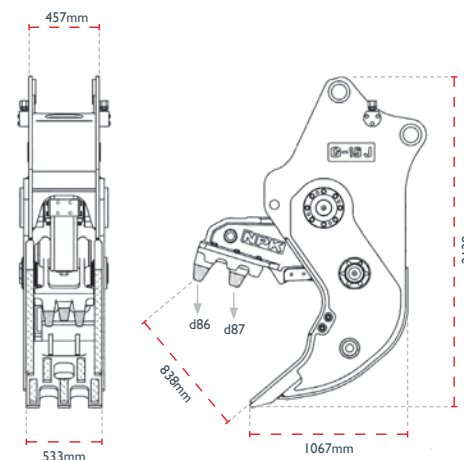
NPK Size Range 10t – 38t

MODEL	OPERATING WEIGHT	MAX JAW OPENING	WORKING PRESSURE	EXCAVATOR
G120	1160 Kg	775 mm	28 MPa	10~17 ton
G18	2054 Kg	823 mm	26 MPa	17~22 ton
G28	2960 Kg	1000 mm	28 MPa	25~38 ton

DAEMO Size Range 10t – 38t

MODEL	OPERATING WEIGHT	MAX JAW OPENING	WORKING PRESSURE	EXCAVATOR
DMP140	1350 Kg	867 mm	31 MPa	14~22 ton

G18



PULVERISERS



Pulverisers crush and process concrete on site separating it from re-bar and leaving behind smaller chunks, making the material easier for processing and manoeuvring

- We have fixed jaw or rotational pulverisers available for hire.

Email us today for further information
attachments@plantforce.com

MULTI PROCESSORS



AUGERS



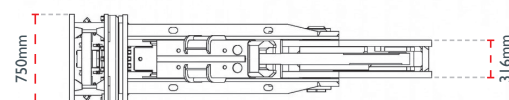
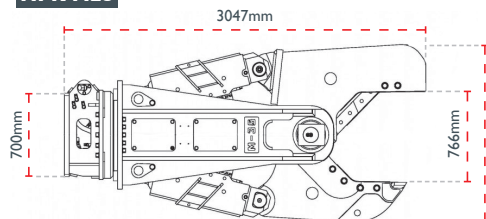
NPK Size Range 20t – 50t

MODEL	OPERATING WEIGHT	MAX JAW OPENING	WORKING PRESSURE	EXCAVATOR
M20	Pulveriser 2100 Kg	Pulveriser 770 mm	25 MPa	17~24 ton
	Shear 2100 Kg	Shear 540 mm		
	Cracker 2000 Kg	Cracker 940 mm		
M28	Pulveriser 3150 Kg	Pulveriser 910 mm	25 MPa	28~40 ton
	Shear 3130 Kg	Shear 638 mm		
M38	Pulveriser 4150 Kg	Pulveriser 1140 mm	25 MPa	35~45 ton
	Shear 4250 Kg	Shear 735 mm		

DAEMO Size Range 20t – 30t Features Quick Change Jaws, replace within 30 minutes!

MODEL	OPERATING WEIGHT	MAX JAW OPENING	WORKING PRESSURE	EXCAVATOR
DMP200Q	Pulveriser 2200 Kg	Pulveriser 843 mm	31 MPa	20~30 ton
	Shear 2037 Kg	Shear 393 mm		

NPK M28



MULTI PROCESSORS

NPK®

Our NPK multi processors have different jaws to suit different applications

- The NPK multi processor has a pulveriser jaw for cutting through re-enforced concrete, a blade for cutting re-bar and a 360-degree rotation.
- NPK source and build to the highest quality to ensure high productivity and minimal down time.

Email us today for further information
attachments@plantforce.com

AUGERTORQUE Size Range 1.5t – 20t

MODEL	OPERATING WEIGHT	TORQUE RANGE	SPEED RANGE	EXCAVATOR
X2500	48 Kg	830 - 2,847 Nm	36 - 87 rpm	1.5~3 ton
8000 MAX	116 Kg	2,717 - 8,152 Nm	33 - 70 rpm	6~8 ton
15000 MAX	173 Kg	5,024 - 15,071 Nm	20 - 43 rpm	10~15 ton
20000 MAX	268 Kg	13,043 - 19,564 Nm	16 - 33 rpm	13~20 ton

8000 MAX



Earth Drill Hitches

ALSO AVAILABLE



Augers and Extensions

AUGERS



This range of augers have been specifically designed for use on excavators between 1.5t - 20t and large backhoes

- They are available with a number of wearpart combinations, catering from soft grounds all the way to mixed rocky grounds and even permafrost.
- All AugerTorque augers are built from high grade steel and incorporate many features that will allow you to work more efficiently and will make your job easier. Shallow pitch flights ensure they will cut with maximum efficiency and, most importantly keep the spoil on the flights when removed from the hole.

Email us today for further information
attachments@plantforce.com

Digital



WHAT WE DO



COMPLETE MACHINE



SET UP SUPPORT & DESIGN MANAGEMENT SOLUTIONS



STANDALONE UNITS

What we do

Plantforce Digital is a specialist division, focused on offering GPS solutions that allow our customers to increase the accuracy and efficiencies of their projects.

Our team of GPS experts are on the forefront of the latest innovations in this technology, ensuring we have an extensive fleet of GPS enabled machines and stand-alone units available for immediate hire.

By only working with leading manufacturers, we are able to offer a consistent quality solution for all customers.



CAB KITS

CAB KITS

Leica Cab Kit



Leica Cab Kits

The iCG80 GNSS receiver in combination with CGA 60 GNSS antenna increases the performance of your iCON machine control solution, allowing you to work more productively than ever before. Increase dozer, excavator, drilling, excavator, wheel loader, grader and paver machine uptime.

Unique Machine Features:

- Easily transported by trailer.
- Ideal machine when working in confined spaces or with limited access.
- Easy to operate.
- Safe, compliant and competitive.



Trimble Cab Kit



Trimble Cab Kits

Our Trimble GPS machine control cab kit hire range will give you the ability to run GPS on your GPS-ready excavator without the financial commitment of purchasing the expensive equipment yourself.

Trimble is widely recognised as one of the leading manufacturers of GPS machine control technology. The new Trimble Earthworks Platform is designed to help operators do more in less time than ever before.

Unique Machine Features:

- Suitable for all GPS-ready excavators and dozers
- Installation support available
- Technical user support is available
- Site set-up support is available
- Design preparation service is available
- Technology training is available
- Nationwide delivery and/or collection available



Email us today for further information
digital@plantforce.com

BASE STATIONS

GNSS ROVERS

Leica Base Station



Leica Base Station

Our Leica GPS base station kit hire range will allow you to complete your own GNSS surveys without the financial commitment of purchasing the expensive equipment yourself.

Leica is widely recognised as one of the leading manufacturers of GPS machine control technology.

Unique Machine Features:

- Compatible to work with all Leica GPS solutions
- Installation support available
- Technical user support is available
- Site set-up support is available
- Design preparation service is available
- Technology training is available
- Nationwide delivery and/or collection available

Trimble Base Station



Trimble Base Station

Our Trimble GPS base station kit hire range will allow you to complete your own GNSS surveys without the financial commitment of purchasing the expensive equipment yourself.

Trimble is widely recognised as one of the leading manufacturers of GPS machine control technology. The new Trimble Earthworks Platform is designed to help operators do more in less time than ever before.

Unique Machine Features:

- Compatible to work with all Trimble GPS solutions
- Installation support available
- Technical user support is available
- Site set-up support is available
- Design preparation service is available
- Technology training is available
- Nationwide delivery and/or collection available

Email us today for further information
digital@plantforce.com

Leica GNSS Rover



Leica GNSS Rover

Our Leica GNSS rover hire range will allow you to complete your own GNSS surveys without the financial commitment of purchasing the expensive equipment yourself.

Backed by a legacy of GNSS technology leadership and surveying expertise, Leica provides surveyors and GIS professionals with reliable, innovative GNSS survey solutions that meet their distinct requirements.

Unique Machine Features:

- Compatible to work with all Leica GPS solutions
- Installation support available
- Technical user support is available
- Site set-up support is available
- Design preparation service is available
- Technology training is available
- Nationwide delivery and/or collection available

Trimble GNSS Rover



Trimble GNSS Rover

Our Trimble GNSS rover hire range will allow you to complete your own GNSS surveys without the financial commitment of purchasing the expensive equipment yourself.

Backed by a legacy of GNSS technology leadership and surveying expertise, Trimble provides surveyors and GIS professionals with reliable, innovative GNSS survey solutions that meet their distinct requirements.

Unique Machine Features:

- Compatible to work with all Trimble GPS solutions
- Installation support available
- Technical user support is available
- Site set-up support is available
- Design preparation service is available
- Technology training is available
- Nationwide delivery and/or collection available

Email us today for further information
digital@plantforce.com

Partnerships



LP Training

LP Training Services are an experienced training provider, originally from Bridgwater, Where we deliver our industry leading Apprenticeship Program.

It has been set up to provide workers and clients with the right skills and accreditations required to work within a variety of different roles on Construction, Rail and

Engineering sites across the UK. The aim is to provide a flexible and accommodating approach in order to give you the best chance of success.



“ We continuously invest in the latest training equipment and programmes to ensure our workforce are up-skilled to meet ever updating demands of the UK construction industry.”

Weston College

No longer do engineers use paper drawings and spray paint to mark out a road formation on the ground, or a stick to measure the fuel level in an excavator, it's all about fuel efficiency and communication systems. The excavators use telematics systems to report on fuel economy, engineers are designing buildings in cloud-based 3D CAD software which is then loaded on to the machine remotely. In the very same way a satnav

tells you where to go, the same tech is used to guide an excavator to grade, manage materials and plan work flows. Plantforce take pride in educating the future of our industry in partnership with Weston College. This approach delivers fresh talent that have been trained on the latest generation of machines and a full range of aftermarket technology solutions from leading manufacturers.





Safe Approach



Training

At Plantforce, we have our own C C N S G-cleared, C P C S and P T S-accredited plant operators, so we're able to provide the perfect solution whether you're looking for self-drive or operated equipment.

Health & Safety

Here at Plantforce health and safety is our priority, whether this is ensuring the health and wellbeing of our team through medicals and welfare engagement or making certain that we are working and collaborating in the safest way possible with the help of our robust inspection and

audit strategy. Our dedicated team of health and safety professionals ensure that we operate at the highest possible levels of compliance and practice along with driving our vision of continual improvement throughout the business.



Our people



plantforce



Claire Trott
Founder Executive
Director



Sam Mercer
Chief Executive Officer



Jane Gibbons
Operations Director



Charles Murphy
Chief Financial Officer

“Since my first day, Claire has always said that “any business is only as good as its people”. This has stuck with me, and when I look around the team at Plantforce, I can see how that has been embedded into our culture. With members of the team like Chris Bruce (Sales Director) that have been with us for all 23 years and counting, we are very lucky to have a large percentage of long-serving staff. Something that is no mean feat when you look at the huge changes we have gone through to transform from our humble beginnings in a muddy yard in Yatton to the national player we are today. None of this would have been possible without the hard work and dedication of our team, whose ability to adapt and overcome always astounds me.

Although we have always held our family-run business ethos close to our hearts, as a collective, we have an astute recognition that our teams’ individuality is what sets us apart. As a female-led business in a typically male-dominated industry, we always have and will continue to understand the challenges people in all minorities face and will strive to offer both an inclusive environment within our business, but also open the doors to the rest of the industry. The perfect example is our apprenticeship programme, which continues to provide a gateway to the industry for all, regardless of age, ethnicity, gender, sexual orientation or any other factor that could discriminate.”

Sam Mercer

Environmental Focus



Environmentally focused fleet investment strategy

As part of our ongoing commitment to work towards achieving Net Zero emissions, we are delighted to confirm we have been awarded ISO 50001 certification.

The International Organisation for Standardisation's (ISO) 50001 certification supports organisations in all sectors to use energy more efficiently. It provides a framework of requirements for companies, such as

developing an energy efficiency policy, measuring the performance of energy-efficient systems and planning continual energy management strategies.

Well done to all the team that have helped us achieve this latest ISO certification.



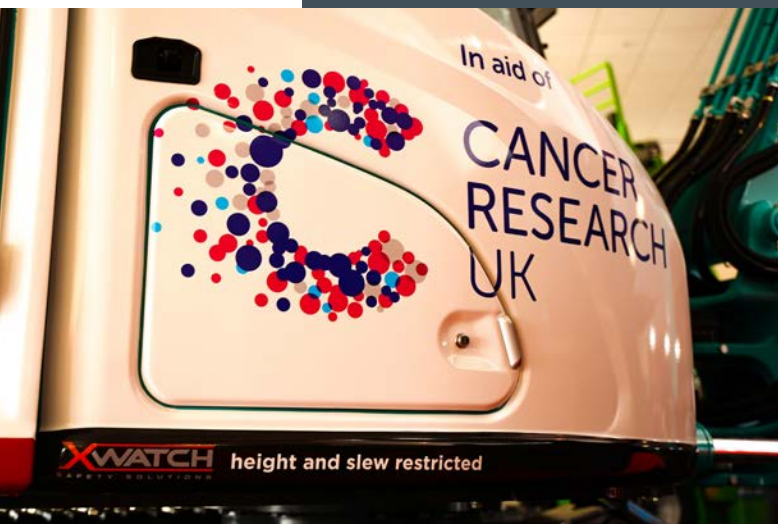
Social Responsibility



2022 Charity partner with over £15k fundraising completed.



Over 5 team members raised money for Bristol Hitz charity.



Project Manager Nicki Reed has decided to Brave the Shave for



Social Responsibility



Cotswold
Canals Trust

Watch the video [HERE](#)



-  2,769 miles driven
-  3.2 tons of aid
-  £4k value of goods
-  160 volunteer hours



Convoy to Slovakia as part of the Plant and Hire Aid Alliance



Governance

Accreditations

We maintain and develop our strong safety culture ensuring that all levels of the business are involved in health, safety and training from directorship to our operatives on the ground.

We hold regular safety meetings throughout all tiers of the business to ensure everyone's involvement.

Our qualified team are proud to have had our quality and safety management systems externally accredited to ISO 14001, ISO 45001, ISO 9001 and ISO 50001 standards.

Our commitment is reflected across the board, from the information available within the hire process to the backup and support when having to deal with site incidents.

As subscribers to the Construction Industry Training Board (CITB) and active members of the Construction Plant Association (CPA), we are always at the forefront of new developments and ensure our staff are trained in the latest techniques.



Trade Associations

With one of the focuses looking at personnel satisfaction, our health and safety department aim to continually improve on our companies safety expectations.



Policies

[Privacy Policy](#)

[Modern Slavery Policy](#)

[Hire Terms and Conditions](#)

[Cookie Policy](#)



Contact Us

DEPOTS



Bristol Depot

Winterstoke Road
Weston-Super-Mare
Bristol BS23 3YW

01934 640840



Exeter Depot

Chancel Lane, Pinhoe
Exeter EX4 8JT

01392 344880



Bridgwater Depot

Unit 3, Dunball Industrial Estate
Bridgwater, Somerset TA6 4TP

01278 558760



Cornwall Depot

Moordown, St Ives,
Liskeard PL14 3NA

01579 383185



Midlands Depot

Snitterfield Road, Bearley
Stratford-upon-Avon
Warwickshire CV37 0EX

0121 371 0900



Warrington Satellite Depot

Athlone Road
Warrington WA2 8JJ

07000 606606



Inverness Satellite Depot

Old Station Road, Tore
Inverness IV6 7SD

07000 606606



Bury Depot

Close Nook Farm
Rochdale Road, Bury BL0 0RR

01934 640840





One Brand. One Team. One Plantforce.