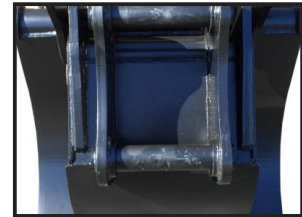


Box Tine Grapple Any 6-9 Ton



£POA

3 & 2 Tin Box Tine Grapple, Heavy Duty Grapple built by us in the UK, can be finished to suit any 6-9 Ton excavators.

Also available are 14-22 Ton Grapples, build time normally 10 days.

Product Details	
<i>Category/Type</i>	<i>Mechanical Grapples</i>
<i>Make</i>	<i>Box Tine Grapple</i>
<i>Model</i>	<i>Any 6-9 Ton</i>
<i>Weight</i>	-
<i>Dimensions</i>	-

Unit 6c/d, Bulwark Ind. Est., Chepstow, Monmouthshire, NP16 5QZ

Tel: 01291 630073 Fax: 01291 630561

www.bmc-buckets.co.uk sales@bmc-buckets.co.uk